
Product Name: Histone H2B Rabbit Polyclonal Antibody**Catalog #: APRab00111**

For research use only.

Summary

Description	Rabbit polyclonal Antibody
Host	Rabbit
Application	WB,IHC,ICC/IF,FC,IP
Reactivity	Human,Mouse,Rat
Conjugation	Unconjugated
Modification	Unmodified
Isotype	IgG
Clonality	Polyclonal
Form	Liquid
Concentration	1mg/ml
Storage	Aliquot and store at -20°C (valid for 12 months). Avoid freeze/thaw cycles.
Shipping	Ice bags
Buffer	Rabbit IgG in phosphate buffered saline , pH 7.4, 150mM NaCl, 0.02% sodium azide and 50% glycerol.
Purification	Affinity Chromatography

Application

Dilution Ratio	WB 1:500-1:1000,IHC 1:50-1:100,ICC/IF 1:50-1:200,FC 1:50-1:100,IP 1:20-1:50
Molecular Weight	Calculated MW: 14 kDa; Observed MW: 14 kDa

Antigen Information

Gene Name	H2BC12
Alternative Names	Histone H2B type 1-H; Histone H2B,j; H2B/j; HIST1H2BH; H2BFJ
Gene ID	85236
SwissProt ID	O60814
Immunogen	A synthetic peptide of human Histone H2B

Background

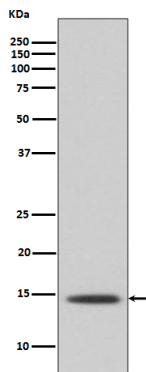
Core component of nucleosome. Nucleosomes wrap and compact DNA into chromatin, limiting DNA accessibility to the cellular machineries which require DNA as a template. Histones thereby play a central role in transcription regulation, DNA

repair, DNA replication and chromosomal stability.

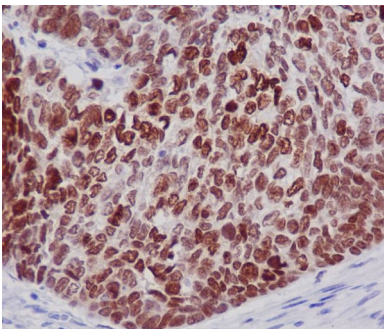
Research Area

Epigenetics and Nuclear Signaling

Image Data



Western blot analysis of Histone H2B in A431 lysates using Histone H2B antibody.



Immunohistochemistry analysis of paraffin-embedded Human lung cancer using Histone H2B antibody. High-pressure and temperature Sodium Citrate pH 6.0 was used for antigen retrieval.