
Product Name: SMC1A Rabbit Polyclonal Antibody**Catalog #: APRab00107**

For research use only.

Summary

Description	Rabbit polyclonal Antibody
Host	Rabbit
Application	WB,IHC,ICC/IF
Reactivity	Human,Mouse,Rat
Conjugation	Unconjugated
Modification	Unmodified
Isotype	IgG
Clonality	Polyclonal
Form	Liquid
Concentration	1mg/ml
Storage	Aliquot and store at -20°C (valid for 12 months). Avoid freeze/thaw cycles.
Shipping	Ice bags
Buffer	Rabbit IgG in phosphate buffered saline , pH 7.4, 150mM NaCl, 0.02% sodium azide and 50% glycerol.
Purification	Affinity Chromatography

Application

Dilution Ratio	WB 1:500-1:1000,IHC 1:50-1:100,ICC/IF 1:50-1:200
Molecular Weight	Calculated MW: 143 kDa; Observed MW: 143 kDa

Antigen Information

Gene Name	SMC1A Chromosome segregation protein SmcB; DXS423E; KIAA0178; MGC138332; Sb1.8; Segregation of mitotic chromosomes 1; SMC protein 1A; SMC-1-alpha; SMC-1A; SMC1 (structural maintenance of chromosomes 1 yeast) like 1; SMC1; SMC1 structural maintenance of chromosomes 1 like 1; SMC1A; SMC1A_HUMAN; SMC1alpha; SMC1L1; SMCB; Structural maintenance of chromosomes 1A; Structural maintenance of chromosomes protein 1A.
Alternative Names	
Gene ID	8243
SwissProt ID	Q14683

Immunogen

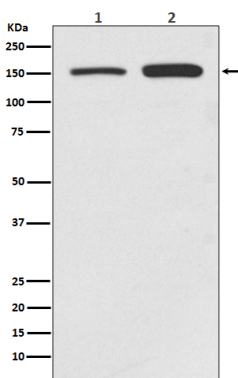
A synthetic peptide corresponding to target protein

Background

Structural maintenance of chromosomes 1 (SMC1) protein is a chromosomal protein member of the cohesin complex that enables sister chromatid cohesion and plays a role in DNA repair. ATM/NBS1-dependent phosphorylation of SMC1 occurs at Ser957 and Ser966 in response to ionizing radiation (IR) as part of the intra-S-phase DNA damage checkpoint. SMC1 phosphorylation is ATM-independent in cells subjected to other forms of DNA damage, including UV light and hydroxyurea treatment.

Research Area

Cell Biology

Image Data

Western blot analysis of SMC1 in (1) HeLa lysates; (2) Jurkat lysates using SMC1A antibody.