
Product Name: Rab7 Rabbit Polyclonal Antibody**Catalog #: APRab00106**

For research use only.

Summary

Description	Rabbit polyclonal Antibody
Host	Rabbit
Application	WB,IHC,ICC/IF,FC
Reactivity	Human,Mouse,Rat
Conjugation	Unconjugated
Modification	Unmodified
Isotype	IgG
Clonality	Polyclonal
Form	Liquid
Concentration	1mg/ml
Storage	Aliquot and store at -20°C (valid for 12 months). Avoid freeze/thaw cycles.
Shipping	Ice bags
Buffer	Rabbit IgG in phosphate buffered saline , pH 7.4, 150mM NaCl, 0.02% sodium azide and 50% glycerol.
Purification	Affinity Chromatography

Application

Dilution Ratio	WB 1:500-1:1000,IHC 1:50-1:100,ICC/IF 1:50-1:200,FC 1:50-1:100
Molecular Weight	Calculated MW: 23 kDa; Observed MW: 23 kDa

Antigen Information

Gene Name	RAB7A
Alternative Names	RAB7; PRO2706
Gene ID	7879
SwissProt ID	P51149
Immunogen	A synthetic peptide of human RAB7

Background

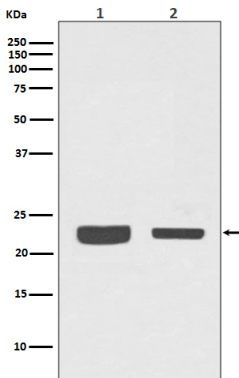
Plays a role in the fusion of phagosomes with lysosomes. Plays important roles in microbial pathogen infection and survival, as well as in participating in the life cycle of viruses. Microbial pathogens possess survival strategies governed by RAB7A,

sometimes by employing RAB7A function (e.g. Salmonella) and sometimes by excluding RAB7A function.

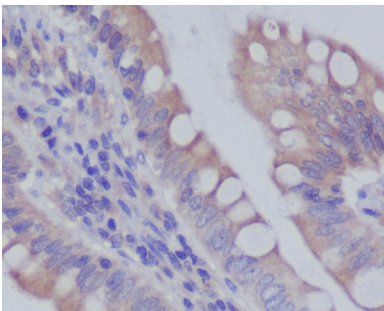
Research Area

Tags & Cell Markers

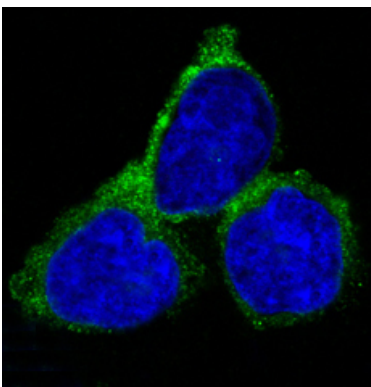
Image Data



Western blot analysis of RAB7 in (1) A375 lysates; (2) 3T3 lysates using Rab7 antibody.



Immunohistochemistry analysis of paraffin-embedded Human colon using RAB7 antibody. High-pressure and temperature Sodium Citrate pH 6.0 was used for antigen retrieval.



Immunofluorescence analysis of Rab7 in HeLa using RAB7 antibody.