
Product Name: IRF3 Rabbit Polyclonal Antibody**Catalog #: APRab00102**

For research use only.

Summary

Description	Rabbit polyclonal Antibody
Host	Rabbit
Application	WB,IHC,ICC/IF,FC
Reactivity	Human,Mouse,Rat
Conjugation	Unconjugated
Modification	Unmodified
Isotype	IgG
Clonality	Polyclonal
Form	Liquid
Concentration	1mg/ml
Storage	Aliquot and store at -20°C (valid for 12 months). Avoid freeze/thaw cycles.
Shipping	Ice bags
Buffer	Rabbit IgG in phosphate buffered saline , pH 7.4, 150mM NaCl, 0.02% sodium azide and 50% glycerol.
Purification	Affinity Chromatography

Application

Dilution Ratio	WB 1:500-1:1000,IHC 1:50-1:100,ICC/IF 1:50-1:200,FC 1:50-1:100
Molecular Weight	Calculated MW: 47 kDa; Observed MW: 57 kDa

Antigen Information

Gene Name	IRF3
Alternative Names	IRF3; Interferon regulatory factor 3; IRF-3
Gene ID	3661
SwissProt ID	Q14653
Immunogen	A synthetic peptide corresponding to target protein

Background

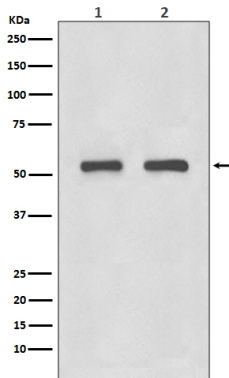
IRFs comprise a family of transcription factors that function within the Jak/Stat pathway to regulate interferon (IFN) and IFN-inducible gene expression in response to viral infection. IRF-3 can inhibit cell growth and plays a critical role in controlling the

expression of genes in the innate immune response.

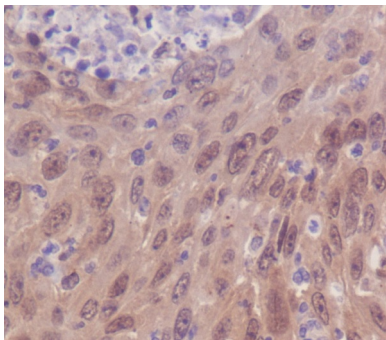
Research Area

Signal Transduction

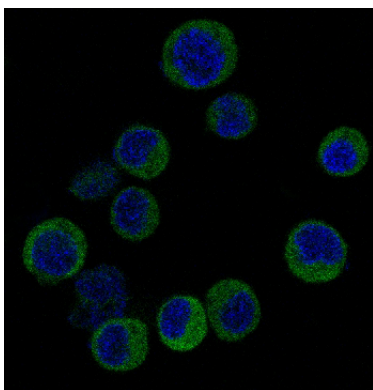
Image Data



Western blot analysis of IRF3 in (1) HeLa lysates; (2) 3T3 lysates using IRF3 antibody.



Immunohistochemistry analysis of paraffin-embedded Human cervix carcinoma using IRF3 antibody. High-pressure and temperature Sodium Citrate pH 6.0 was used for antigen retrieval.



Immunofluorescence analysis of IRF3 in Jurkat using IRF3 antibody.