

Product Name: Anterior Gradient 2 Rabbit Polyclonal Antibody**Catalog #: APRab00100**

For research use only.

Summary

Description	Rabbit polyclonal Antibody
Host	Rabbit
Application	WB,IHC,ICC/IF,FC,IP
Reactivity	Human
Conjugation	Unconjugated
Modification	Unmodified
Isotype	IgG
Clonality	Polyclonal
Form	Liquid
Concentration	1mg/ml
Storage	Aliquot and store at -20°C (valid for 12 months). Avoid freeze/thaw cycles.
Shipping	Ice bags
Buffer	Rabbit IgG in phosphate buffered saline , pH 7.4, 150mM NaCl, 0.02% sodium azide and 50% glycerol.
Purification	Affinity Chromatography

Application

Dilution Ratio	WB 1:500-1:1000,IHC 1:50-1:100,ICC/IF 1:50-1:200,FC 1:50-1:100,IP 1:20-1:50
Molecular Weight	Calculated MW: 20 kDa; Observed MW: 17 kDa

Antigen Information

Gene Name	AGR2
Alternative Names	Anterior gradient protein 2 homolog; AG-2; hAG-2; HPC8; Secreted cement gland protein XAG-2 homolog; AGR2; AG2; GOB4; XAG2
Gene ID	10551
SwissProt ID	O95994
Immunogen	Recombinant protein of human Anterior Gradient 2

Background

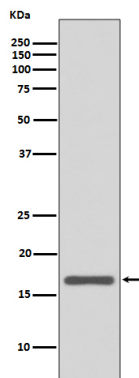
AGR2 is a member of the protein disulfide isomerase (PDI) family of proteins and a homolog of the *Xenopus laevis* cement

gland protein. Required for MUC2 post-transcriptional synthesis and secretion. May play a role in the production of mucus by intestinal cells (By similarity). Proto-oncogene that may play a role in cell migration, cell differentiation and cell growth.

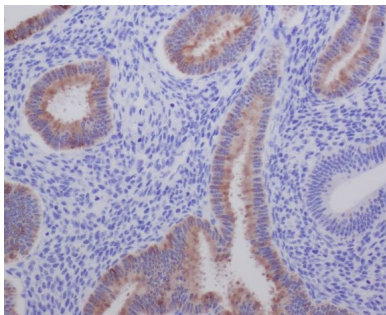
Research Area

Cancer

Image Data



Western blot analysis of AGR2 in MCF-7 lysates using Anterior Gradient 2 antibody.



Immunohistochemistry analysis of paraffin-embedded Human uterus using AGR2 antibody. High-pressure and temperature Sodium Citrate pH 6.0 was used for antigen retrieval.