

Product Name: SHP2 Rabbit Polyclonal Antibody**Catalog #: APRab00098**

For research use only.

Summary

Description	Rabbit polyclonal Antibody
Host	Rabbit
Application	WB,IHC,ICC/IF,IP
Reactivity	Human
Conjugation	Unconjugated
Modification	Unmodified
Isotype	IgG
Clonality	Polyclonal
Form	Liquid
Concentration	1mg/ml
Storage	Aliquot and store at -20°C (valid for 12 months). Avoid freeze/thaw cycles.
Shipping	Ice bags
Buffer	Rabbit IgG in phosphate buffered saline , pH 7.4, 150mM NaCl, 0.02% sodium azide and 50% glycerol.
Purification	Affinity Chromatography

Application

Dilution Ratio	WB 1:500-1:1000,IHC 1:50-1:100,ICC/IF 1:50-1:200,IP 1:20-1:50
Molecular Weight	Calculated MW: 68 kDa; Observed MW: 68 kDa

Antigen Information

Gene Name	PTPN11
Alternative Names	PTPN11; PTP2C; SHPTP2; Tyrosine-protein phosphatase non-receptor type 11; Protein-tyrosine phosphatase 1D; PTP-1D; Protein-tyrosine phosphatase 2C; PTP-2C; SH-PTP2; SHP-2; Shp2; SH-PTP3
Gene ID	5781
SwissProt ID	Q06124
Immunogen	A synthetic peptide corresponding to target protein

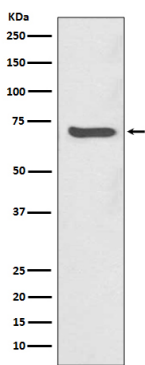
Background

SHP-2 is a SH2-containing ubiquitously expressed tyrosine-specific protein phosphatase. It participates in signaling events downstream of receptors for growth factors, cytokines, hormones, antigens and extracellular matrices in the control of cell growth, differentiation, migration, and death.

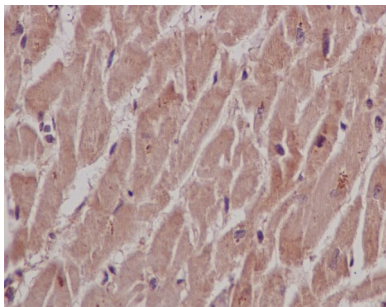
Research Area

Signal Transduction

Image Data



Western blot analysis of SHP2 in Jurkat lysates using SHP2 antibody.



Immunohistochemistry analysis of paraffin-embedded Human heart using SHP2 antibody. High-pressure and temperature Sodium Citrate pH 6.0 was used for antigen retrieval.