

---

**Product Name: Cytochrome C Rabbit Polyclonal Antibody****Catalog #: APRab00095**

For research use only.

**Summary**

<b>Description</b>	Rabbit polyclonal Antibody
<b>Host</b>	Rabbit
<b>Application</b>	WB,IHC,ICC/IF,IP
<b>Reactivity</b>	Human,Mouse,Rat
<b>Conjugation</b>	Unconjugated
<b>Modification</b>	Unmodified
<b>Isotype</b>	IgG
<b>Clonality</b>	Polyclonal
<b>Form</b>	Liquid
<b>Concentration</b>	1mg/ml
<b>Storage</b>	Aliquot and store at -20°C (valid for 12 months). Avoid freeze/thaw cycles.
<b>Shipping</b>	Ice bags
<b>Buffer</b>	Rabbit IgG in phosphate buffered saline , pH 7.4, 150mM NaCl, 0.02% sodium azide and 50% glycerol.
<b>Purification</b>	Affinity Chromatography

**Application**

<b>Dilution Ratio</b>	WB 1:500-1:1000,IHC 1:50-1:100,ICC/IF 1:50-1:200,IP 1:20-1:50
<b>Molecular Weight</b>	Calculated MW: 12 kDa; Observed MW: 12 kDa

**Antigen Information**

<b>Gene Name</b>	CYCS
<b>Alternative Names</b>	CYCS; CYC; Cytochrome c
<b>Gene ID</b>	54205
<b>SwissProt ID</b>	P99999
<b>Immunogen</b>	A synthetic peptide of human Cytochrome C

**Background**

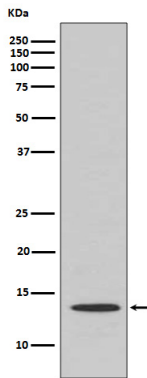
CYCS Electron carrier protein. The oxidized form of the cytochrome c heme group can accept an electron from the heme group of the cytochrome c1 subunit of cytochrome reductase. Cytochrome c then transfers this electron to the cytochrome oxidase

complex, the final protein carrier in the mitochondrial electron-transport chain.

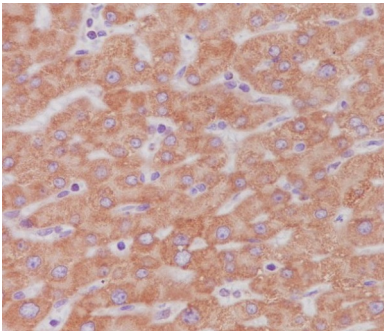
## Research Area

Cardiovascular

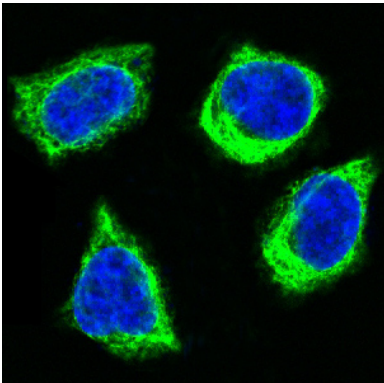
## Image Data



Western blot analysis of Cytochrome C in Human kidney lysates using Cytochrome C antibody.



Immunohistochemistry analysis of paraffin-embedded Human liver using Cytochrome C antibody. High-pressure and temperature Sodium Citrate pH 6.0 was used for antigen retrieval.



Immunofluorescence analysis of Cytochrome C in HeLa cells using Cytochrome C antibody.