
Product Name: Topoisomerase I Rabbit Polyclonal Antibody**Catalog #: APRab00094**

For research use only.

Summary

Description	Rabbit polyclonal Antibody
Host	Rabbit
Application	WB,IHC,ICC/IF,FC
Reactivity	Human,Mouse
Conjugation	Unconjugated
Modification	Unmodified
Isotype	IgG
Clonality	Polyclonal
Form	Liquid
Concentration	1mg/ml
Storage	Aliquot and store at -20°C (valid for 12 months). Avoid freeze/thaw cycles.
Shipping	Ice bags
Buffer	Rabbit IgG in phosphate buffered saline , pH 7.4, 150mM NaCl, 0.02% sodium azide and 50% glycerol.
Purification	Affinity Chromatography

Application

Dilution Ratio	WB 1:500-1:1000,IHC 1:50-1:100,ICC/IF 1:50-1:200,FC 1:50-1:100
Molecular Weight	Calculated MW: 91 kDa; Observed MW: 91 kDa

Antigen Information

Gene Name	TOP1
Alternative Names	TOP1; DNA topoisomerase 1; DNA topoisomerase I
Gene ID	7150
SwissProt ID	P11387
Immunogen	A synthetic peptide of human Topoisomerase I

Background

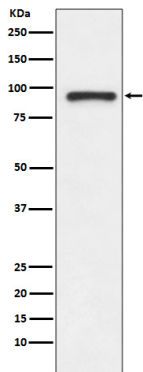
Releases the supercoiling and torsional tension of DNA introduced during the DNA replication and transcription by transiently cleaving and rejoining one strand of the DNA duplex. Introduces a single-strand break via transesterification at a target site in

duplex DNA. The scissile phosphodiester is attacked by the catalytic tyrosine of the enzyme, resulting in the formation of a DNA-(3'-phosphotyrosyl)-enzyme intermediate and the expulsion of a 5'-OH DNA strand.

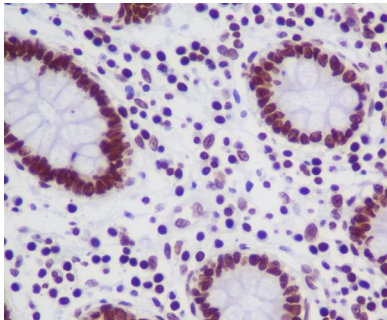
Research Area

Epigenetics and Nuclear Signaling

Image Data



Western blot analysis of TOP1 in Jurkat lysates using Topoisomerase I antibody.



Immunohistochemistry analysis of paraffin-embedded Human colon using TOP1 antibody. High-pressure and temperature Sodium Citrate pH 6.0 was used for antigen retrieval.