

Product Name: MEKK2 Rabbit Polyclonal Antibody
Catalog #: APRab00088



Summary

Production Name	MEKK2 Rabbit Polyclonal Antibody
Description	Rabbit Polyclonal Antibody
Host	Rabbit
Application	WB,IHC-P,ICC/IF,FC,IP
Reactivity	Human,Mouse,Rat

Performance

Conjugation	Unconjugated
Modification	Unmodified
Isotype	IgG
Clonality	Polyclonal
Form	Liquid
Storage	Store at 4°C short term. Aliquot and store at -20°C long term. Avoid freeze/thaw cycles.
Buffer	Rabbit IgG in phosphate buffered saline , pH 7.4, 150mM NaCl, 0.02% sodium azide and 50% glycerol.
Purification	Affinity Chromatography

Immunogen

Gene Name	MAP3K2
Alternative Names	MAP3K2; MAPKKK2; MEKK2; Mitogen-activated protein kinase kinase kinase 2; MAPK/ERK kinase kinase 2; MEK kinase 2; MEKK 2
Gene ID	10746
SwissProt ID	Q9Y2U5.

Application

Dilution Ratio	WB: 1:500-1:1000 IHC: 1:50-1:100 IF: 1:50-1:200 IP: 1:20 FC: 1:50-1:100
Molecular Weight	Calculated MW: 70 kDa; Observed MW: 70 kDa

Product Name: MEKK2 Rabbit Polyclonal Antibody
Catalog #: AP Rab00088



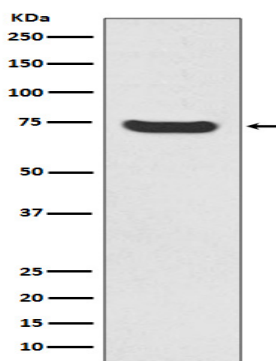
Background

The protein encoded by this gene is a member of serine/threonine protein kinase family. This kinase preferentially activates the kinases involved in the MAP kinase signaling pathway including MAPK7 and MAP2K4. This kinase has been shown to directly phosphorylate and activate I κ B kinases (IKKs), and thus plays a role in NF- κ B signaling pathway. This kinase has also been found to bind and activate protein kinase C-related kinase 2 (PRKCL2/PRK2), which suggests its involvement in PRKCL2 regulated signaling process.

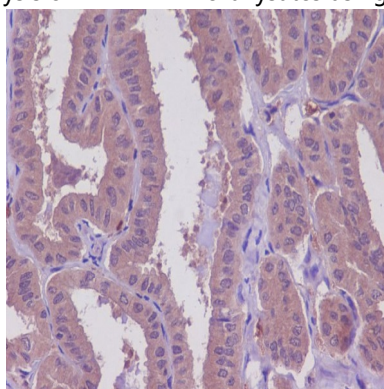
Research Area

Signal Transduction

Image Data



Western blot analysis of MEKK2 in HeLa lysates using MEKK2 antibody.



Immunohistochemistry analysis of paraffin-embedded Human thyroid cancer using MEKK2 antibody. High-pressure and temperature Sodium Citrate pH 6.0 was used for antigen retrieval.

Note

For research use only.