
Product Name: RDC1 Rabbit Polyclonal Antibody**Catalog #: APRab00084**

For research use only.

Summary

Description	Rabbit polyclonal Antibody
Host	Rabbit
Application	WB,FC
Reactivity	Human,Mouse,Rat
Conjugation	Unconjugated
Modification	Unmodified
Isotype	IgG
Clonality	Polyclonal
Form	Liquid
Concentration	1mg/ml
Storage	Aliquot and store at -20°C (valid for 12 months). Avoid freeze/thaw cycles.
Shipping	Ice bags
Buffer	Rabbit IgG in phosphate buffered saline , pH 7.4, 150mM NaCl, 0.02% sodium azide and 50% glycerol.
Purification	Affinity Chromatography

Application

Dilution Ratio	WB 1:500-1:1000,FC 1:50-1:100
Molecular Weight	Calculated MW: 41 kDa; Observed MW: 41 kDa

Antigen Information

Gene Name	ACKR3
Alternative Names	RDC1; CXCR7; RDC-1; CMKOR1; CXC-R7; CXCR-7; GPR159
Gene ID	57007
SwissProt ID	P25106
Immunogen	A synthetic peptide of human GPCR RDC1

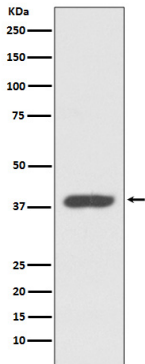
Background

Plays a regulatory role in CXCR4-mediated activation of cell surface integrins by CXCL12. Required for heart valve development. Acts as coreceptor with CXCR4 for a restricted number of HIV isolates.

Research Area

Signal Transduction

Image Data



Western blot analysis of CXCR7 in K562 lysates using RDC1 antibody.