
Product Name: RPS20 Rabbit Polyclonal Antibody**Catalog #: APRab00083**

For research use only.

Summary

Description	Rabbit polyclonal Antibody
Host	Rabbit
Application	WB,IHC,ICC/IF
Reactivity	Human,Mouse,Rat
Conjugation	Unconjugated
Modification	Unmodified
Isotype	IgG
Clonality	Polyclonal
Form	Liquid
Concentration	1mg/ml
Storage	Aliquot and store at -20°C (valid for 12 months). Avoid freeze/thaw cycles.
Shipping	Ice bags
Buffer	Rabbit IgG in phosphate buffered saline , pH 7.4, 150mM NaCl, 0.02% sodium azide and 50% glycerol.
Purification	Affinity Chromatography

Application

Dilution Ratio	WB 1:500-1:1000,IHC 1:50-1:100,ICC/IF 1:50-1:200
Molecular Weight	Calculated MW: 13 kDa; Observed MW: 13 kDa

Antigen Information

Gene Name	RPS20
Alternative Names	RPS20; 40S ribosomal protein S20
Gene ID	6224
SwissProt ID	P60866
Immunogen	A synthetic peptide of human RPS20

Background

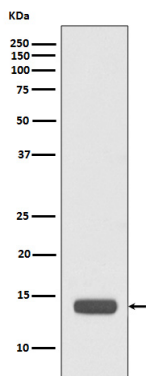
RPS20 is a ribosomal protein that is a component of the 40S subunit. Ribosomes, the organelles that catalyze protein synthesis, consist of a small 40S subunit and a large 60S subunit. Together these subunits are composed of 4 RNA species and

approximately 80 structurally distinct proteins. RPS20 belongs to the S10P family of ribosomal proteins and is located in the cytoplasm.

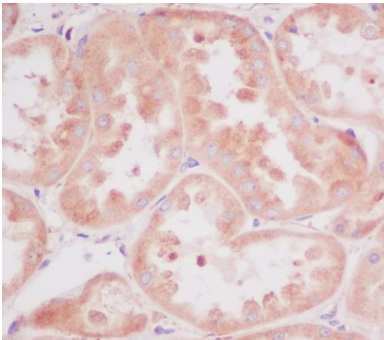
Research Area

Epigenetics and Nuclear Signaling

Image Data



Western blot analysis of RPS20 in HeLa lysates using RPS20 antibody.



Immunohistochemistry analysis of paraffin-embedded Human kidney using RPS20 antibody. High-pressure and temperature Sodium Citrate pH 6.0 was used for antigen retrieval.