
Product Name: Cortactin Rabbit Polyclonal Antibody**Catalog #: APRab00077**

For research use only.

Summary

Description	Rabbit polyclonal Antibody
Host	Rabbit
Application	WB,IHC,ICC/IF,FC,IP
Reactivity	Human,Mouse,Rat
Conjugation	Unconjugated
Modification	Unmodified
Isotype	IgG
Clonality	Polyclonal
Form	Liquid
Concentration	1mg/ml
Storage	Aliquot and store at -20°C (valid for 12 months). Avoid freeze/thaw cycles.
Shipping	Ice bags
Buffer	Rabbit IgG in phosphate buffered saline , pH 7.4, 150mM NaCl, 0.02% sodium azide and 50% glycerol.
Purification	Affinity Chromatography

Application

Dilution Ratio	WB 1:500-1:1000,IHC 1:50-1:100,ICC/IF 1:50-1:200,FC 1:50-1:100,IP 1:20-1:50
Molecular Weight	Calculated MW: 62 kDa; Observed MW: 80 kDa

Antigen Information

Gene Name	CTTN
Alternative Names	CTTN; EMS1; Src substrate cortactin; Amplexin; Oncogene EMS1
Gene ID	2017
SwissProt ID	Q14247
Immunogen	A synthetic peptide of human Cortactin

Background

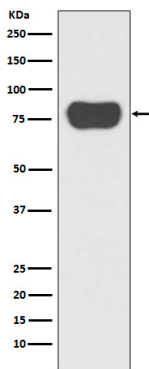
Cortactin a cytoskeletal protein that that is involved in coordinating actin reorganization during cell movement. Localizes at the leading edge of lamellipodia during cell migration. Its amino-terminal acidic domain associates with the Arp2/3 and WASP

complex at F-actin branches.

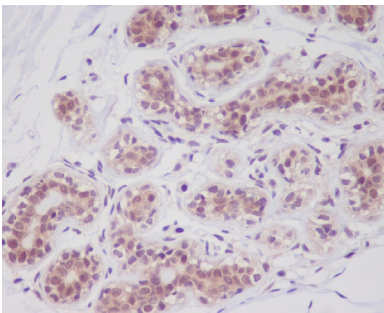
Research Area

Signal Transduction

Image Data



Western blot analysis of Cortactin in HeLa lysates using Cortactin antibody.



Immunohistochemistry analysis of paraffin-embedded Human breast cancer using Cortactin antibody. High-pressure and temperature Sodium Citrate pH 6.0 was used for antigen retrieval.