

Product Name: Chk2 Rabbit Polyclonal Antibody**Catalog #: APRab00075**

For research use only.

Summary

Description	Rabbit polyclonal Antibody
Host	Rabbit
Application	WB,IHC,ICC/IF,IP
Reactivity	Human
Conjugation	Unconjugated
Modification	Unmodified
Isotype	IgG
Clonality	Polyclonal
Form	Liquid
Concentration	1mg/ml
Storage	Aliquot and store at -20°C (valid for 12 months). Avoid freeze/thaw cycles.
Shipping	Ice bags
Buffer	Rabbit IgG in phosphate buffered saline , pH 7.4, 150mM NaCl, 0.02% sodium azide and 50% glycerol.
Purification	Affinity Chromatography

Application

Dilution Ratio	WB 1:500-1:1000,IHC 1:50-1:100,ICC/IF 1:50-1:200,IP 1:20-1:50
Molecular Weight	Calculated MW: 61 kDa; Observed MW: 61 kDa

Antigen Information

Gene Name	CHEK2
Alternative Names	CHEK2; CDS1; CHK2; RAD53; Serine/threonine-protein kinase Chk2; CHK2 checkpoint homolog; Cds1 homolog; Hucds1; hCds1; Checkpoint kinase 2
Gene ID	11200
SwissProt ID	O96017
Immunogen	A synthetic peptide corresponding to target protein

Background

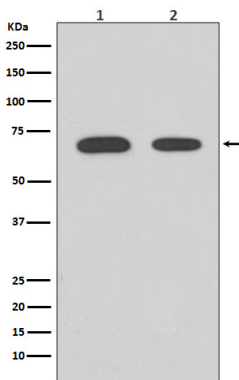
These are known to be preferred sites for phosphorylation by ATM/ATR kinases. After DNA damage by ionizing radiation (IR),

UV irradiation, or hydroxyurea treatment, Thr68 and other sites in this region become phosphorylated by ATM/ATR. The SQ/TQ cluster domain, therefore, seems to have a regulatory function.

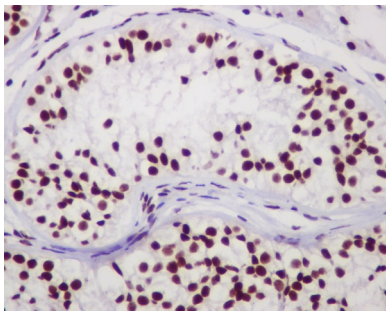
Research Area

Epigenetics and Nuclear Signaling

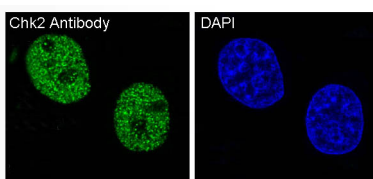
Image Data



Western blot analysis of Chk2 in (1) HeLa lysates; (2) 293T lysates using Chk2 antibody.



Immunohistochemistry analysis of paraffin-embedded Human testis using Chk2 antibody. High-pressure and temperature Sodium Citrate pH 6.0 was used for antigen retrieval.



Immunofluorescence analysis of Chk2 in HeLa using Chk2 antibody.