

---

**Product Name: CD3 epsilon Rabbit Polyclonal Antibody****Catalog #: APRab00067**

For research use only.

**Summary**

<b>Description</b>	Rabbit polyclonal Antibody
<b>Host</b>	Rabbit
<b>Application</b>	WB,IHC,FC,IP
<b>Reactivity</b>	Human
<b>Conjugation</b>	Unconjugated
<b>Modification</b>	Unmodified
<b>Isotype</b>	IgG
<b>Clonality</b>	Polyclonal
<b>Form</b>	Liquid
<b>Concentration</b>	1mg/ml
<b>Storage</b>	Aliquot and store at -20°C (valid for 12 months). Avoid freeze/thaw cycles.
<b>Shipping</b>	Ice bags
<b>Buffer</b>	Rabbit IgG in phosphate buffered saline , pH 7.4, 150mM NaCl, 0.02% sodium azide and 50% glycerol.
<b>Purification</b>	Affinity Chromatography

**Application**

<b>Dilution Ratio</b>	WB 1:500-1:1000,IHC 1:50-1:100,FC 1:50-1:100,IP 1:20-1:50
<b>Molecular Weight</b>	Calculated MW: 23 kDa; Observed MW: 23 kDa

**Antigen Information**

<b>Gene Name</b>	CD3E
<b>Alternative Names</b>	CD3E; T3E; T-cell surface glycoprotein CD3 epsilon chain; T-cell surface antigen T3/Leu-4 epsilon chain; CD3e
<b>Gene ID</b>	916
<b>SwissProt ID</b>	P07766
<b>Immunogen</b>	A synthetic peptide of human CD3 epsilon

**Background**

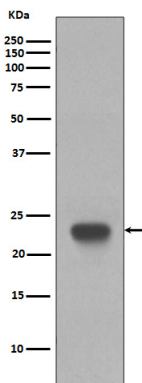
The CD3 complex mediates signal transduction. When T cells encounter antigens via the T cell receptor (TCR), information

about the quantity and quality of antigens is relayed to the intracellular signal transduction machinery . This activation process depends mainly on CD3 (Cluster of Differentiation 3), a multiunit protein complex that directly associates with the TCR. CD3 is composed of four polypeptides:  $\zeta$ ,  $\gamma$ ,  $\epsilon$  and  $\delta$ .

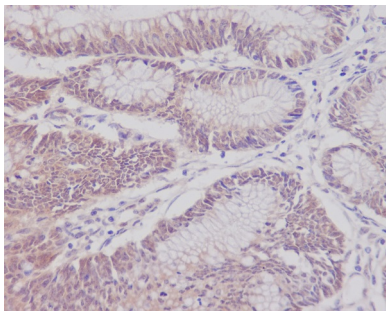
## Research Area

Immunology

## Image Data



Western blot analysis of CD3 epsilon in Jurkat lysates using CD3 epsilon antibody.



Immunohistochemistry analysis of paraffin-embedded Human colon cancer using CD3 epsilon antibody. High-pressure and temperature Sodium Citrate pH 6.0 was used for antigen retrieval.