

Product Name: Lamin B Receptor Rabbit Polyclonal Antibody**Catalog #: APRab00063**

For research use only.

Summary

| | |
|----------------------|--|
| Description | Rabbit polyclonal Antibody |
| Host | Rabbit |
| Application | WB,IHC,ICC/IF,IP |
| Reactivity | Human,Rat |
| Conjugation | Unconjugated |
| Modification | Unmodified |
| Isotype | IgG |
| Clonality | Polyclonal |
| Form | Liquid |
| Concentration | 1mg/ml |
| Storage | Aliquot and store at -20°C (valid for 12 months). Avoid freeze/thaw cycles. |
| Shipping | Ice bags |
| Buffer | Rabbit IgG in phosphate buffered saline , pH 7.4, 150mM NaCl, 0.02% sodium azide and 50% glycerol. |
| Purification | Affinity Chromatography |

Application

| | |
|-------------------------|---|
| Dilution Ratio | WB 1:500-1:1000,IHC 1:50-1:100,ICC/IF 1:50-1:200,IP 1:20-1:50 |
| Molecular Weight | Calculated MW: 71 kDa; Observed MW: 71 kDa |

Antigen Information

| | |
|--------------------------|---|
| Gene Name | LBR |
| Alternative Names | PHA; LMN2R; TDRD18; DHCR14B; LBR |
| Gene ID | 3930 |
| SwissProt ID | Q14739 |
| Immunogen | A synthetic peptide of human Lamin B Receptor |

Background

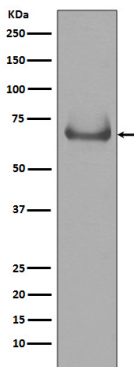
The protein encoded by this gene belongs to the ERG4/ERG24 family. It localized in the nuclear envelope inner membrane and anchors the lamina and the heterochromatin to the membrane. It may mediate interaction between chromatin and lamin B.

Mutations of this gene has been associated with autosomal recessive HEM/Greenberg skeletal dysplasia. Alternative splicing occurs at this locus and two transcript variants encoding the same protein have been identified.

Research Area

Tags & Cell Markers

Image Data



Western blot analysis of Lamin B Receptor in Jurkat lysates using Lamin B Receptor antibody.