
Product Name: ATP Citrate lyase Rabbit Polyclonal Antibody**Catalog #: APRab00062**

For research use only.

Summary

Description	Rabbit polyclonal Antibody
Host	Rabbit
Application	WB,IHC,ICC/IF,FC,IP
Reactivity	Human,Mouse,Rat
Conjugation	Unconjugated
Modification	Unmodified
Isotype	IgG
Clonality	Polyclonal
Form	Liquid
Concentration	1mg/ml
Storage	Aliquot and store at -20°C (valid for 12 months). Avoid freeze/thaw cycles.
Shipping	Ice bags
Buffer	Rabbit IgG in phosphate buffered saline , pH 7.4, 150mM NaCl, 0.02% sodium azide and 50% glycerol.
Purification	Affinity Chromatography

Application

Dilution Ratio	WB 1:500-1:1000,IHC 1:50-1:100,ICC/IF 1:50-1:200,FC 1:50-1:100,IP 1:20-1:50
Molecular Weight	Calculated MW: 121 kDa; Observed MW: 121 kDa

Antigen Information

Gene Name	ACLY
Alternative Names	ACLY; ATP-citrate synthase; ATP-citrate; pro-S-)-lyase; ACL; Citrate cleavage enzyme
Gene ID	47
SwissProt ID	P53396
Immunogen	A synthetic peptide corresponding to target protein

Background

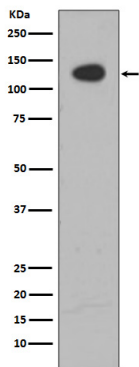
ATP citrate lyase is the primary enzyme responsible for the synthesis of cytosolic acetyl-CoA in many tissues. The enzyme is a tetramer (relative molecular weight approximately 440,000) of apparently identical subunits. It catalyzes the formation of

acetyl-CoA and oxaloacetate from citrate and CoA with a concomitant hydrolysis of ATP to ADP and phosphate. The product, acetyl-CoA, serves several important biosynthetic pathways, including lipogenesis and cholesterologenesis.

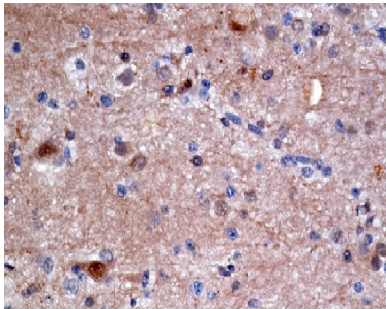
Research Area

Signal Transduction

Image Data



Western blot analysis of ATP citrate lyase in HeLa lysates using ATP Citrate lyase antibody.



Immunohistochemistry analysis of paraffin-embedded Human brain carcinoma using ATP citrate lyase antibody. High-pressure and temperature Sodium Citrate pH 6.0 was used for antigen retrieval.