
Product Name: FLI1 Rabbit Polyclonal Antibody**Catalog #: APRab00060**

For research use only.

Summary

Description	Rabbit polyclonal Antibody
Host	Rabbit
Application	WB,IHC
Reactivity	Human,Mouse
Conjugation	Unconjugated
Modification	Unmodified
Isotype	IgG
Clonality	Polyclonal
Form	Liquid
Concentration	1mg/ml
Storage	Aliquot and store at -20°C (valid for 12 months). Avoid freeze/thaw cycles.
Shipping	Ice bags
Buffer	Rabbit IgG in phosphate buffered saline , pH 7.4, 150mM NaCl, 0.02% sodium azide and 50% glycerol.
Purification	Affinity Chromatography

Application

Dilution Ratio	WB 1:500-1:1000,IHC 1:50-1:100
Molecular Weight	Calculated MW: 51 kDa; Observed MW: 51 kDa

Antigen Information

Gene Name	FLI1
Alternative Names	FLI1; Friend leukemia integration 1 transcription factor; Proto-oncogene Fli-1; Transcription factor ERGB
Gene ID	2313
SwissProt ID	Q01543
Immunogen	A synthetic peptide of human FLI1

Background

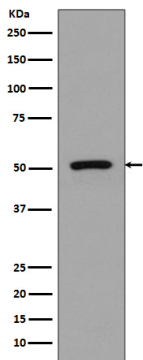
FLI1 Sequence-specific transcriptional activator. Recognizes the DNA sequence 5'-C[CA]GGAAGT-3'. Belongs to the ETS family.

Can form homodimers or heterodimers with ETV6/TEL1. 2 isoforms of the human protein are produced by alternative splicing.

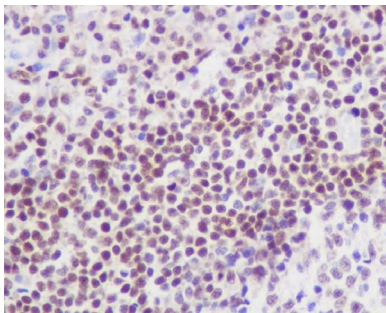
Research Area

Cell Biology

Image Data



Western blot analysis of FLI1 in Jurkat lysates using FLI1 antibody.



Immunohistochemistry analysis of paraffin-embedded Human tonsil using FLI1 antibody. High-pressure and temperature Sodium Citrate pH 6.0 was used for antigen retrieval.