

---

**Product Name: Midkine Rabbit Polyclonal Antibody****Catalog #: APRab00059**

For research use only.

**Summary**

<b>Description</b>	Rabbit polyclonal Antibody
<b>Host</b>	Rabbit
<b>Application</b>	WB,IHC,ICC/IF,IP
<b>Reactivity</b>	Human
<b>Conjugation</b>	Unconjugated
<b>Modification</b>	Unmodified
<b>Isotype</b>	IgG
<b>Clonality</b>	Polyclonal
<b>Form</b>	Liquid
<b>Concentration</b>	1mg/ml
<b>Storage</b>	Aliquot and store at -20°C (valid for 12 months). Avoid freeze/thaw cycles.
<b>Shipping</b>	Ice bags
<b>Buffer</b>	Rabbit IgG in phosphate buffered saline , pH 7.4, 150mM NaCl, 0.02% sodium azide and 50% glycerol.
<b>Purification</b>	Affinity Chromatography

**Application**

<b>Dilution Ratio</b>	WB 1:500-1:1000,IHC 1:50-1:100,ICC/IF 1:50-1:200,IP 1:20-1:50
<b>Molecular Weight</b>	Calculated MW: 16 kDa; Observed MW: 16 kDa

**Antigen Information**

<b>Gene Name</b>	MDK
<b>Alternative Names</b>	MDK; FLJ27379; MK1; NEGF2; Midkine; NEGF2; ARAP
<b>Gene ID</b>	4192
<b>SwissProt ID</b>	P21741
<b>Immunogen</b>	A synthetic peptide of human Midkine

**Background**

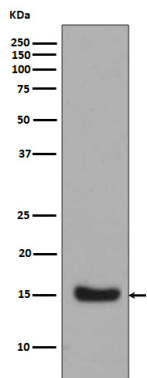
Midkine, or MK, is a heparin-binding molecule involved in the regulation of growth and differentiation during embryogenesis. MK expression is tightly regulated during embryonic development by steroid receptors of the retinoic acid superfamily. The

mature human MK protein is 118 amino acids in length and contains five intrachain disulfide bonds. MK is a non-glycosylated protein that shows greater than 87% identity between human and mouse.

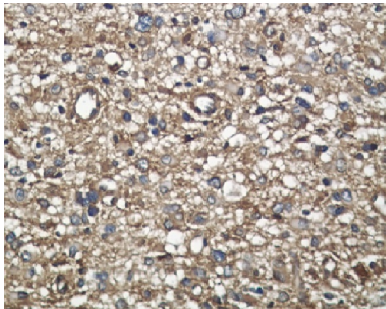
## Research Area

Neuroscience

## Image Data



Western blot analysis of Midkine in Midkine Recombinant protein using Midkine antibody.



Immunohistochemistry analysis of paraffin-embedded Human liver carcinoma using Midkine antibody. High-pressure and temperature Sodium Citrate pH 6.0 was used for antigen retrieval.