

---

**Product Name: Hsp90 alpha/beta Rabbit Polyclonal Antibody****Catalog #: APRab00057**

For research use only.

**Summary**

<b>Description</b>	Rabbit polyclonal Antibody
<b>Host</b>	Rabbit
<b>Application</b>	WB,IHC,ICC/IF,FC,IP
<b>Reactivity</b>	Human,Mouse,Rat
<b>Conjugation</b>	Unconjugated
<b>Modification</b>	Unmodified
<b>Isotype</b>	IgG
<b>Clonality</b>	Polyclonal
<b>Form</b>	Liquid
<b>Concentration</b>	1mg/ml
<b>Storage</b>	Aliquot and store at -20°C (valid for 12 months). Avoid freeze/thaw cycles.
<b>Shipping</b>	Ice bags
<b>Buffer</b>	Rabbit IgG in phosphate buffered saline , pH 7.4, 150mM NaCl, 0.02% sodium azide and 50% glycerol.
<b>Purification</b>	Affinity Chromatography

**Application**

<b>Dilution Ratio</b>	WB 1:500-1:1000,IHC 1:50-1:100,ICC/IF 1:50-1:200,FC 1:50-1:100,IP 1:20-1:50
<b>Molecular Weight</b>	Calculated MW: 85 kDa; Observed MW: 90 kDa

**Antigen Information**

<b>Gene Name</b>	HSP90AA1/HSP90AB1 HSP90AA1; HSP90A; HSPC1; HSPCA; Heat shock protein HSP 90-alpha; Heat shock 86 kDa;
<b>Alternative Names</b>	HSP 86; HSP86; Renal carcinoma antigen NY-REN-38; HSP90AB1; HSP90B; HSPC2; HSPCB; Heat shock protein HSP 90-beta; HSP 90; Heat shock 84 kDa; HSP 84; HSP84
<b>Gene ID</b>	3320/3326
<b>SwissProt ID</b>	P07900/P08238
<b>Immunogen</b>	

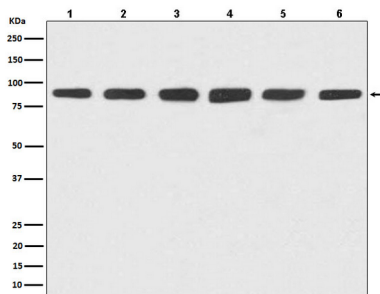
**Background**

Molecular chaperone that promotes the maturation, structural maintenance and proper regulation of specific target proteins involved for instance in cell cycle control and signal transduction. Undergoes a functional cycle that is linked to its ATPase activity. This cycle probably induces conformational changes in the client proteins, thereby causing their activation.

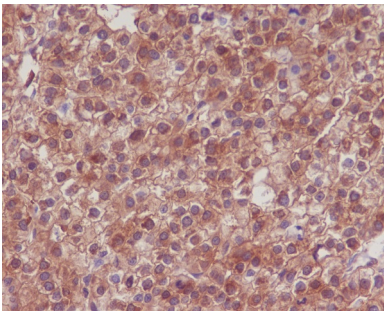
## Research Area

Signal Transduction

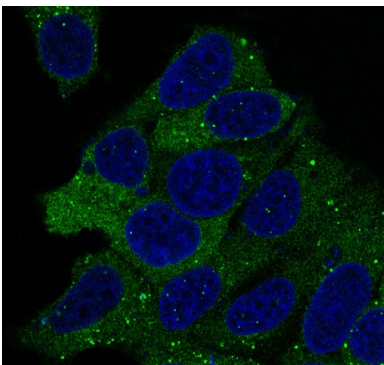
## Image Data



Western blot analysis of Hsp90 in (1) HeLa lysates; (2) Jurkat lysates; (3) RAW264.7 lysates; (4) NIH/3T3 lysates; (5) PC-12 lysates; (6) C6 lysates using Hsp90 alpha/beta antibody.



Immunohistochemistry analysis of paraffin-embedded Human liver carcinoma using Hsp90 antibody. High-pressure and temperature Sodium Citrate pH 6.0 was used for antigen retrieval.



Immunofluorescence analysis of Hsp90 alpha/beta in HeLa using Hsp90 antibody.