
Product Name: Rab5 Rabbit Polyclonal Antibody**Catalog #: APRab00055**

For research use only.

Summary

Description	Rabbit polyclonal Antibody
Host	Rabbit
Application	WB,IHC
Reactivity	Human,Mouse,Rat
Conjugation	Unconjugated
Modification	Unmodified
Isotype	IgG
Clonality	Polyclonal
Form	Liquid
Concentration	1mg/ml
Storage	Aliquot and store at -20°C (valid for 12 months). Avoid freeze/thaw cycles.
Shipping	Ice bags
Buffer	Rabbit IgG in phosphate buffered saline , pH 7.4, 150mM NaCl, 0.02% sodium azide and 50% glycerol.
Purification	Affinity Chromatography

Application

Dilution Ratio	WB 1:500-1:1000,IHC 1:50-1:100
Molecular Weight	Calculated MW: 24 kDa; Observed MW: 24 kDa

Antigen Information

Gene Name	RAB5A
Alternative Names	RAB5A; RAB5; RAS associated protein RAB5A; Ras related protein Rab 5A
Gene ID	5868
SwissProt ID	P20339
Immunogen	A synthetic peptide of human Rab5

Background

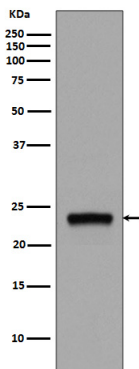
Rab5 is a member of the Ras superfamily of small Rab GTPases. Rab5 is localized at the plasma membrane and early endosomes and functions as a key regulator of vesicular trafficking during early endocytosis (1). The conformational change between Rab5

GTP/GDP states is essential for its biological function as a rate limiting regulator at multiple steps during endocytosis.

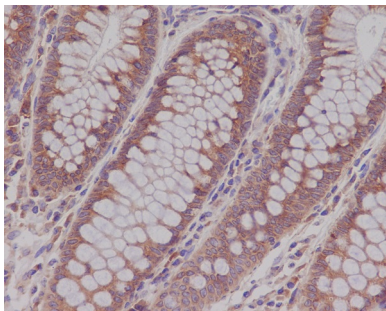
Research Area

Tags & Cell Markers

Image Data



Western blot analysis of Rab5 in MCF-7 lysates using Rab5 antibody.



Immunohistochemistry analysis of paraffin-embedded Human colon using Rab5 antibody. High-pressure and temperature Sodium Citrate pH 6.0 was used for antigen retrieval.