
Product Name: ASH2L Rabbit Polyclonal Antibody**Catalog #: APRab00052**

For research use only.

Summary

| | |
|----------------------|--|
| Description | Rabbit polyclonal Antibody |
| Host | Rabbit |
| Application | WB,IHC,ICC/IF |
| Reactivity | Human,Mouse,Rat |
| Conjugation | Unconjugated |
| Modification | Unmodified |
| Isotype | IgG |
| Clonality | Polyclonal |
| Form | Liquid |
| Concentration | 1mg/ml |
| Storage | Aliquot and store at -20°C (valid for 12 months). Avoid freeze/thaw cycles. |
| Shipping | Ice bags |
| Buffer | Rabbit IgG in phosphate buffered saline , pH 7.4, 150mM NaCl, 0.02% sodium azide and 50% glycerol. |
| Purification | Affinity Chromatography |

Application

| | |
|-------------------------|--|
| Dilution Ratio | WB 1:500-1:1000,IHC 1:50-1:100,ICC/IF 1:50-1:200 |
| Molecular Weight | Calculated MW: 69 kDa; Observed MW: 69 kDa |

Antigen Information

| | |
|--------------------------|------------------------------------|
| Gene Name | ASH2L |
| Alternative Names | ASH2; Bre2; ASH2L1; ASH2L2 |
| Gene ID | 9070 |
| SwissProt ID | Q9UBL3 |
| Immunogen | A synthetic peptide of human ASH2L |

Background

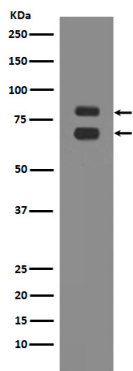
Component of the Set1/Ash2 histone methyltransferase (HMT) complex, a complex that specifically methylates 'Lys-4' of histone H3, but not if the neighboring 'Lys-9' residue is already methylated. As part of the MLL1/MLL complex it is involved in

methylation and dimethylation at 'Lys-4' of histone H3. May function as a transcriptional regulator. May play a role in hematopoiesis.

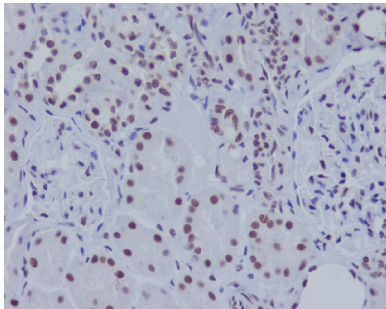
Research Area

Epigenetics and Nuclear Signaling

Image Data



Western blot analysis of ASH2L in K562 lysates using ASH2L antibody.



Immunohistochemistry analysis of paraffin-embedded Human kidney using ASH2L antibody. High-pressure and temperature Sodium Citrate pH 6.0 was used for antigen retrieval.