

---

**Product Name: Prohibitin Rabbit Polyclonal Antibody****Catalog #: APRab00050**

For research use only.

**Summary**

<b>Description</b>	Rabbit polyclonal Antibody
<b>Host</b>	Rabbit
<b>Application</b>	WB,IHC,ICC/IF,FC,IP
<b>Reactivity</b>	Human,Mouse,Rat
<b>Conjugation</b>	Unconjugated
<b>Modification</b>	Unmodified
<b>Isotype</b>	IgG
<b>Clonality</b>	Polyclonal
<b>Form</b>	Liquid
<b>Concentration</b>	1mg/ml
<b>Storage</b>	Aliquot and store at -20°C (valid for 12 months). Avoid freeze/thaw cycles.
<b>Shipping</b>	Ice bags
<b>Buffer</b>	Rabbit IgG in phosphate buffered saline , pH 7.4, 150mM NaCl, 0.02% sodium azide and 50% glycerol.
<b>Purification</b>	Affinity Chromatography

**Application**

<b>Dilution Ratio</b>	WB 1:500-1:1000,IHC 1:50-1:100,ICC/IF 1:50-1:200,FC 1:50-1:100,IP 1:20-1:50
<b>Molecular Weight</b>	Calculated MW: 30 kDa; Observed MW: 30 kDa

**Antigen Information**

<b>Gene Name</b>	PHB1
<b>Alternative Names</b>	PHB1; HEL-215; HEL-S-54e
<b>Gene ID</b>	5245
<b>SwissProt ID</b>	P35232
<b>Immunogen</b>	A synthetic peptide of human Prohibitin

**Background**

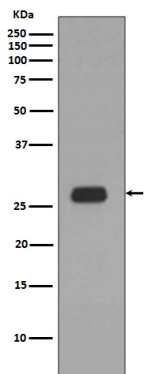
PHB1 is 30kDa tumor suppressor protein involved in cell cycle control. PHB1 has been found in mitochondria, the nucleus and the plasma membrane, as well as extracellularly in circulation. In mitochondria prohibitins mainly exist as membrane-bound

ring complexes and function as chaperones maintaining mitochondrial protein stability during protein synthesis and transportation.

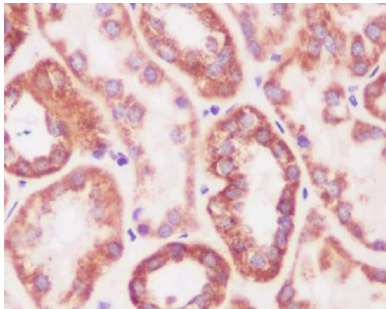
## Research Area

Cell Biology

## Image Data



Western blot analysis of Prohibitin in Ramos lysates using Prohibitin antibody.



Immunohistochemistry analysis of paraffin-embedded Human kidney using Prohibitin antibody. High-pressure and temperature Sodium Citrate pH 6.0 was used for antigen retrieval.