

Product Name: Human IgG4 Rabbit Polyclonal Antibody**Catalog #: APRab00039**

For research use only.

Summary

Description	Rabbit polyclonal Antibody
Host	Rabbit
Application	WB,IHC
Reactivity	Human
Conjugation	Unconjugated
Modification	Unmodified
Isotype	IgG
Clonality	Polyclonal
Form	Liquid
Concentration	1mg/ml
Storage	Aliquot and store at -20°C (valid for 12 months). Avoid freeze/thaw cycles.
Shipping	Ice bags
Buffer	Rabbit IgG in phosphate buffered saline , pH 7.4, 150mM NaCl, 0.02% sodium azide and 50% glycerol.
Purification	Affinity Chromatography

Application

Dilution Ratio	WB 1:500-1:1000,IHC 1:50-1:100
Molecular Weight	Calculated MW: 36 kDa; Observed MW: 36 kDa

Antigen Information

Gene Name	IGHG4
Alternative Names	IGG4; Ig gamma 4 chain C region
Gene ID	3503.0
SwissProt ID	P01861
Immunogen	A synthetic peptide of human IgG4

Background

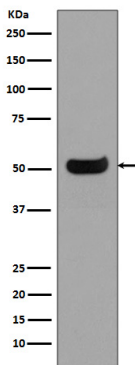
IgG is a monomeric immunoglobulin, built of two heavy chains gamma and two light chains. Each molecule has two antigen binding sites. This is the most abundant immunoglobulin and is approximately equally distributed in blood and in tissue liquids,

constituting 75% of serum immunoglobulins in humans.

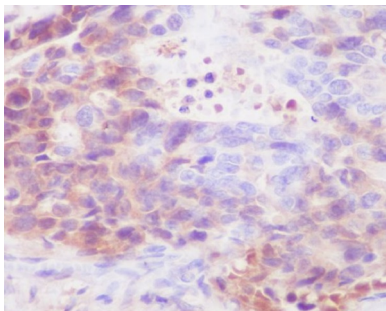
Research Area

Immunology

Image Data



Western blot analysis of IgG4 in Human spleen lysates using Human IgG4 antibody.



Immunohistochemistry analysis of paraffin-embedded Human stomach carcinoma using IgG4 antibody. High-pressure and temperature Sodium Citrate pH 6.0 was used for antigen retrieval.