
Product Name: gamma Tubulin Rabbit Polyclonal Antibody**Catalog #: APRab00035**

For research use only.

Summary

Description	Rabbit polyclonal Antibody
Host	Rabbit
Application	WB,IHC,ICC/IF,FC,IP
Reactivity	Human,Mouse,Rat,Monkey,Other,Hamster,Cow,Other,Fish,Xenopus,Tropicalis
Conjugation	Unconjugated
Modification	Unmodified
Isotype	IgG
Clonality	Polyclonal
Form	Liquid
Concentration	1mg/ml
Storage	Aliquot and store at -20°C (valid for 12 months). Avoid freeze/thaw cycles.
Shipping	Ice bags
Buffer	Rabbit IgG in phosphate buffered saline , pH 7.4, 150mM NaCl, 0.02% sodium azide and 50% glycerol.
Purification	Affinity Chromatography

Application

Dilution Ratio	WB 1:500-1:1000,IHC 1:50-1:100,ICC/IF 1:50-1:200,FC 1:50-1:100,IP 1:20-1:50
Molecular Weight	Calculated MW: 51 kDa; Observed MW: 48 kDa

Antigen Information

Gene Name	TUBG1
Alternative Names	TUBG1; TUBG; Tubulin gamma-1 chain; Gamma-1-tubulin; Gamma-tubulin complex component 1; GCP-1
Gene ID	7283
SwissProt ID	P23258
Immunogen	A synthetic peptide of human gamma Tubulin

Background

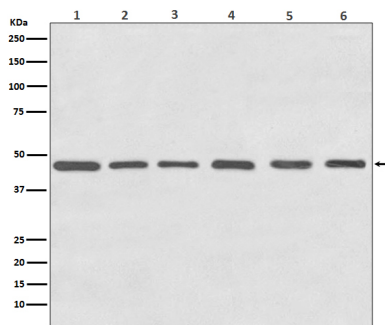
TUBG1 Tubulin is the major constituent of microtubules. Gamma tubulin is found at microtubule organizing centers (MTOC)

such as the spindle poles or the centrosome. Pericentriolar matrix component that regulates alpha/beta tubulin minus-end nucleation, centrosome duplication and spindle formation. Interacts with GCP2 and GCP3. Interacts with B9D2. Interacts with CDK5RAP2;

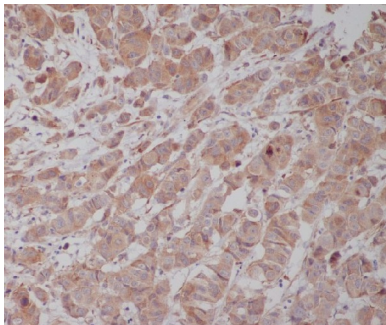
Research Area

Signal Transduction

Image Data



Western blot analysis of Tubulin gamma in (1) HeLa lysates; (2) NIH 3T3 lysates; (3) C6 lysates; (4) Zebrafish lysates; (5) COS1 lysates; (6) MDCK lysates using gamma Tubulin antibody.



Immunohistochemistry analysis of paraffin-embedded Human breast cancer using Tubulin gamma antibody. High-pressure and temperature Sodium Citrate pH 6.0 was used for antigen retrieval.