

Product Name: PKC beta 2 Rabbit Polyclonal Antibody
Catalog #: APRab00034



Summary

Production Name	PKC beta 2 Rabbit Polyclonal Antibody
Description	Rabbit Polyclonal Antibody
Host	Rabbit
Application	WB,IHC-P,ICC/IF,FC,IP
Reactivity	Human,Mouse,Rat

Performance

Conjugation	Unconjugated
Modification	Unmodified
Isotype	IgG
Clonality	Polyclonal
Form	Liquid
Storage	Store at 4°C short term. Aliquot and store at -20°C long term. Avoid freeze/thaw cycles.
Buffer	Rabbit IgG in phosphate buffered saline , pH 7.4, 150mM NaCl, 0.02% sodium azide and 50% glycerol.
Purification	Affinity Chromatography

Immunogen

Gene Name	PRKCB
Alternative Names	PRKCB; PKCB; PRKCB1; Protein kinase C beta type; PKC-B; PKC-beta
Gene ID	5579
SwissProt ID	P05771.

Application

Dilution Ratio	WB: 1:500-1:1000 IHC: 1:50-1:100 IF: 1:50-1:200 IP: 1:20 FC: 1:50-1:100
Molecular Weight	Calculated MW: 77 kDa; Observed MW: 77 kDa

Background

Calcium-activated, phospholipid- and diacylglycerol (DAG)-dependent serine/threonine-protein kinase involved in various

Product Name: PKC beta 2 Rabbit Polyclonal Antibody
Catalog #: APRab00034

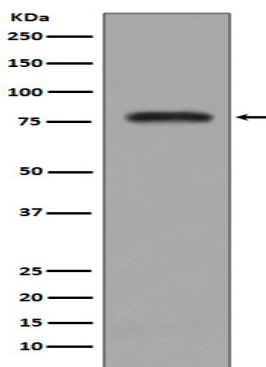


cellular processes such as regulation of the B-cell receptor (BCR) signalosome, oxidative stress-induced apoptosis, androgen receptor-dependent transcription regulation, insulin signaling and endothelial cells proliferation. Plays a key role in B-cell activation by regulating BCR-induced NF-kappa-B activation. Mediates the activation of the canonical NF-kappa-B pathway (NFKB1) by direct phosphorylation of CARD11/CARMA1 at 'Ser-559', 'Ser-644' and 'Ser-652'.

Research Area

Signal Transduction

Image Data



Western blot analysis of PKC beta 2 in K562 lysates using PKC beta 2 antibody.

Note

For research use only.