

---

**Product Name: ABCG1 Rabbit Polyclonal Antibody****Catalog #: APRab00031**

For research use only.

**Summary**

<b>Description</b>	Rabbit polyclonal Antibody
<b>Host</b>	Rabbit
<b>Application</b>	WB,IHC,ICC/IF
<b>Reactivity</b>	Human,Rat
<b>Conjugation</b>	Unconjugated
<b>Modification</b>	Unmodified
<b>Isotype</b>	IgG
<b>Clonality</b>	Polyclonal
<b>Form</b>	Liquid
<b>Concentration</b>	1mg/ml
<b>Storage</b>	Aliquot and store at -20°C (valid for 12 months). Avoid freeze/thaw cycles.
<b>Shipping</b>	Ice bags
<b>Buffer</b>	Rabbit IgG in phosphate buffered saline , pH 7.4, 150mM NaCl, 0.02% sodium azide and 50% glycerol.
<b>Purification</b>	Affinity Chromatography

**Application**

<b>Dilution Ratio</b>	WB 1:500-1:1000,IHC 1:50-1:100,ICC/IF 1:50-1:200
<b>Molecular Weight</b>	Calculated MW: 76 kDa; Observed MW: 110 kDa

**Antigen Information**

<b>Gene Name</b>	ABCG1
<b>Alternative Names</b>	ATP-binding cassette transporter 8; White protein homolog; ABC8; WHT1; ABCG1; ABC transporter 8; WHITE1
<b>Gene ID</b>	9619
<b>SwissProt ID</b>	P45844
<b>Immunogen</b>	A synthetic peptide of human ABCG1

**Background**

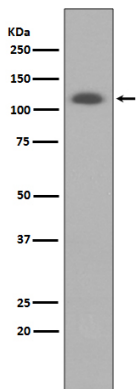
Functions to regulate cholesterol and phospholipid transport in macrophages. ABCG1 is highly expressed in several tissues,

including brain, spleen, lung and placenta, and has been localized to the cell surface and intracellular compartments of cholesterol-laden macrophages.

## Research Area

Neuroscience

## Image Data



Western blot analysis of ABCG1 in HUVEC lysates using ABCG1 antibody.