
Product Name: SHP1 Rabbit Polyclonal Antibody**Catalog #: APRab00029**

For research use only.

Summary

Description	Rabbit polyclonal Antibody
Host	Rabbit
Application	WB,IHC
Reactivity	Human,Mouse,Rat
Conjugation	Unconjugated
Modification	Unmodified
Isotype	IgG
Clonality	Polyclonal
Form	Liquid
Concentration	1mg/ml
Storage	Aliquot and store at -20°C (valid for 12 months). Avoid freeze/thaw cycles.
Shipping	Ice bags
Buffer	Rabbit IgG in phosphate buffered saline , pH 7.4, 150mM NaCl, 0.02% sodium azide and 50% glycerol.
Purification	Affinity Chromatography

Application

Dilution Ratio	WB 1:500-1:1000,IHC 1:50-1:100
Molecular Weight	Calculated MW: 68 kDa; Observed MW: 68 kDa

Antigen Information

Gene Name	PTPN6
Alternative Names	PTPN6; HCP; PTP1C; Tyrosine-protein phosphatase non-receptor type 6; Hematopoietic cell protein-tyrosine phosphatase; Protein-tyrosine phosphatase 1C; PTP-1C; Protein-tyrosine phosphatase SHP-1; SH-PTP1
Gene ID	5777
SwissProt ID	P29350
Immunogen	A synthetic peptide of human SHP1

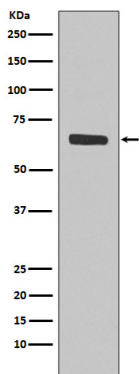
Background

The protein encoded by this gene is a member of the protein tyrosine phosphatase (PTP) family. PTPs are known to be signaling molecules that regulate a variety of cellular processes including cell growth, differentiation, mitotic cycle, and oncogenic transformation.

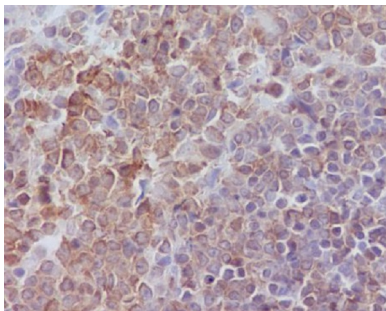
Research Area

Cell Biology

Image Data



Western blot analysis of SHP1 in Jurkat lysates using SHP1 antibody.



Immunohistochemistry analysis of paraffin-embedded rat spleen using SHP1 antibody. High-pressure and temperature Sodium Citrate pH 6.0 was used for antigen retrieval.