

Product Name: SCARB1 Rabbit Polyclonal Antibody**Catalog #: APRab00028**

For research use only.

Summary

Description	Rabbit polyclonal Antibody
Host	Rabbit
Application	WB,IHC,ICC/IF,FC
Reactivity	Human,Mouse,Rat
Conjugation	Unconjugated
Modification	Unmodified
Isotype	IgG
Clonality	Polyclonal
Form	Liquid
Concentration	1mg/ml
Storage	Aliquot and store at -20°C (valid for 12 months). Avoid freeze/thaw cycles.
Shipping	Ice bags
Buffer	Rabbit IgG in phosphate buffered saline , pH 7.4, 150mM NaCl, 0.02% sodium azide and 50% glycerol.
Purification	Affinity Chromatography

Application

Dilution Ratio	WB 1:500-1:1000,IHC 1:50-1:100,ICC/IF 1:50-1:200,FC 1:50-1:100
Molecular Weight	Calculated MW: 61 kDa; Observed MW: 80 kDa

Antigen Information

Gene Name	SCARB1
Alternative Names	CLA1; SRB1; CLA-1; SR-BI; CD36L1; HDLQTL6; Scavenging Receptor SR-BI
Gene ID	949
SwissProt ID	Q8WTV0
Immunogen	Recombinant protein of human Scavenging Receptor SR-BI

Background

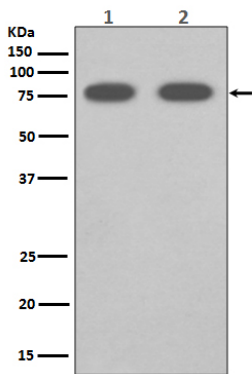
Receptor for different ligands such as phospholipids, cholesterol ester, lipoproteins, phosphatidylserine and apoptotic cells. Probable receptor for HDL, located in particular region of the plasma membrane, called caveolae. Facilitates the flux of free and

esterified cholesterol between the cell surface and extracellular donors and acceptors, such as HDL and to a lesser extent, apoB-containing lipoproteins and modified lipoproteins.

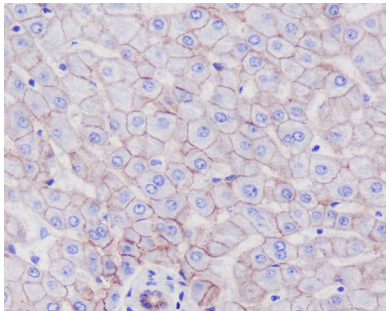
Research Area

Microbiology

Image Data



Western blot analysis of SCARB1 in (1) Human fetal liver lysates; (2) mouse liver lysates using SCARB1 antibody.



Immunohistochemistry analysis of paraffin-embedded Human liver using SCARB1 antibody. High-pressure and temperature Sodium Citrate pH 6.0 was used for antigen retrieval.