
Product Name: LEF1 Rabbit Polyclonal Antibody**Catalog #: APRab00027**

For research use only.

Summary

Description	Rabbit polyclonal Antibody
Host	Rabbit
Application	WB,IHC,ICC/IF,FC,IP
Reactivity	Human,Mouse,Rat
Conjugation	Unconjugated
Modification	Unmodified
Isotype	IgG
Clonality	Polyclonal
Form	Liquid
Concentration	1mg/ml
Storage	Aliquot and store at -20°C (valid for 12 months). Avoid freeze/thaw cycles.
Shipping	Ice bags
Buffer	Rabbit IgG in phosphate buffered saline , pH 7.4, 150mM NaCl, 0.02% sodium azide and 50% glycerol.
Purification	Affinity Chromatography

Application

Dilution Ratio	WB 1:500-1:1000,IHC 1:50-1:100,ICC/IF 1:50-1:200,FC 1:50-1:100,IP 1:20-1:50
Molecular Weight	Calculated MW: 44 kDa; Observed MW: 44 kDa

Antigen Information

Gene Name	LEF1
Alternative Names	LEF1; Lymphoid enhancer-binding factor 1; LEF-1; T cell-specific transcription factor 1-alpha; TCF1-alpha
Gene ID	51176
SwissProt ID	Q9UJU2
Immunogen	A synthetic peptide of human LEF1

Background

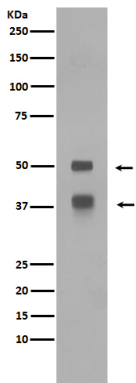
Participates in the Wnt signaling pathway. Activates transcription of target genes in the presence of CTNNB1 and EP300. May

play a role in hair cell differentiation and follicle morphogenesis. TLE1, TLE2, TLE3 and TLE4 repress transactivation mediated by LEF1 and CTNNB1. Regulates T-cell receptor alpha enhancer function. Binds DNA in a sequence-specific manner. PIAG antagonizes both Wnt-dependent and Wnt-independent activation by LEF1 (By similarity).

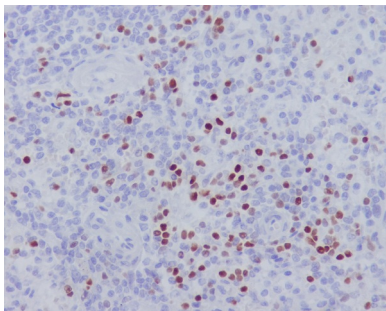
Research Area

Epigenetics and Nuclear Signaling

Image Data



Western blot analysis of LEF1 in Jurkat lysates using LEF1 antibody.



Immunohistochemistry analysis of paraffin-embedded Human spleen using LEF1 antibody. High-pressure and temperature Sodium Citrate pH 6.0 was used for antigen retrieval.