

---

**Product Name: ROCK1 Rabbit Polyclonal Antibody****Catalog #: APRab00026**

For research use only.

**Summary**

<b>Description</b>	Rabbit polyclonal Antibody
<b>Host</b>	Rabbit
<b>Application</b>	WB,IHC,ICC/IF,FC,IP
<b>Reactivity</b>	Human,Mouse,Rat
<b>Conjugation</b>	Unconjugated
<b>Modification</b>	Unmodified
<b>Isotype</b>	IgG
<b>Clonality</b>	Polyclonal
<b>Form</b>	Liquid
<b>Concentration</b>	1mg/ml
<b>Storage</b>	Aliquot and store at -20°C (valid for 12 months). Avoid freeze/thaw cycles.
<b>Shipping</b>	Ice bags
<b>Buffer</b>	Rabbit IgG in phosphate buffered saline , pH 7.4, 150mM NaCl, 0.02% sodium azide and 50% glycerol.
<b>Purification</b>	Affinity Chromatography

**Application**

<b>Dilution Ratio</b>	WB 1:500-1:1000,IHC 1:50-1:100,ICC/IF 1:50-1:200,FC 1:50-1:100,IP 1:20-1:50
<b>Molecular Weight</b>	Calculated MW: 158 kDa; Observed MW: 158 kDa

**Antigen Information**

<b>Gene Name</b>	ROCK1
<b>Alternative Names</b>	ROCK1; Rho-associated protein kinase 1; Renal carcinoma antigen NY-REN-35; Rho-associated; coiled-coil-containing protein kinase 1; Rho-associated; coiled-coil-containing protein kinase I; ROCK-I; p160 ROCK-1; p160ROCK
<b>Gene ID</b>	6093
<b>SwissProt ID</b>	Q13464
<b>Immunogen</b>	A synthetic peptide of human ROCK1

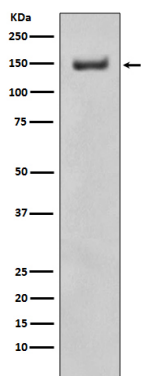
**Background**

ROCK1 Protein kinase which is a key regulator of actin cytoskeleton and cell polarity. Involved in regulation of smooth muscle contraction, actin cytoskeleton organization, stress fiber and focal adhesion formation, neurite retraction, cell adhesion and motility via phosphorylation of DAPK3, GFAP, LIMK1, LIMK2, MYL9/MLC2, PFN1 and PPP1R12A. Phosphorylates FHOD1 and acts synergistically with it to promote SRC-dependent non-apoptotic plasma membrane blebbing.

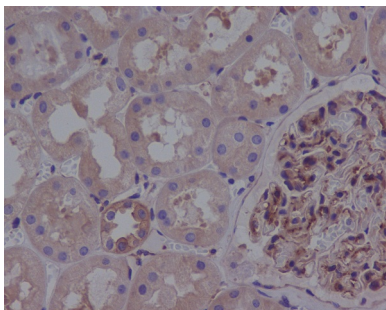
## Research Area

Signal Transduction

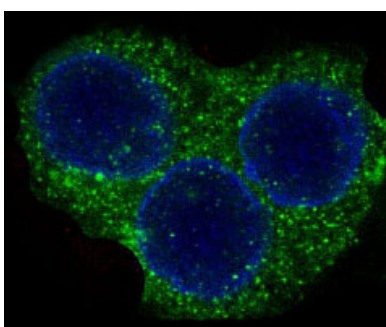
## Image Data



Western blot analysis of ROCK1 in Ramos lysates using ROCK1 antibody.



Immunohistochemistry analysis of paraffin-embedded Human kidney using ROCK1 antibody. High-pressure and temperature Sodium Citrate pH 6.0 was used for antigen retrieval.



Immunofluorescence analysis of ROCK1 in HeLa using ROCK1 antibody.