

**Product Name: Synaptophysin Rabbit Polyclonal Antibody****Catalog #: APRab00020**

For research use only.

**Summary**

<b>Description</b>	Rabbit polyclonal Antibody
<b>Host</b>	Rabbit
<b>Application</b>	WB,IHC,ICC/IF
<b>Reactivity</b>	Human,Mouse,Rat
<b>Conjugation</b>	Unconjugated
<b>Modification</b>	Unmodified
<b>Isotype</b>	IgG
<b>Clonality</b>	Polyclonal
<b>Form</b>	Liquid
<b>Concentration</b>	1mg/ml
<b>Storage</b>	Aliquot and store at -20°C (valid for 12 months). Avoid freeze/thaw cycles.
<b>Shipping</b>	Ice bags
<b>Buffer</b>	Rabbit IgG in phosphate buffered saline , pH 7.4, 150mM NaCl, 0.02% sodium azide and 50% glycerol.
<b>Purification</b>	Affinity Chromatography

**Application**

<b>Dilution Ratio</b>	WB 1:500-1:1000,IHC 1:50-1:100,ICC/IF 1:50-1:200
<b>Molecular Weight</b>	Calculated MW: 34 kDa; Observed MW: 38 kDa

**Antigen Information**

<b>Gene Name</b>	SYP
<b>Alternative Names</b>	SYP; Synaptophysin; Major synaptic vesicle protein p38
<b>Gene ID</b>	6855
<b>SwissProt ID</b>	P08247
<b>Immunogen</b>	A synthetic peptide of human Synaptophysin

**Background**

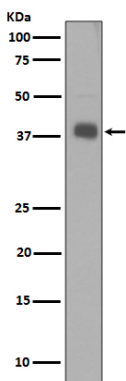
SYP Possibly involved in structural functions as organizing other membrane components or in targeting the vesicles to the plasma membrane. Involved in the regulation of short-term and long-term synaptic plasticity. Belongs to the

synaptophysin/synaptobrevin family. Homohexamer or homotetramer. Note: This description may include information from UniProtKB.

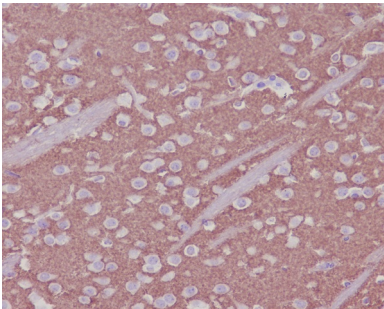
## Research Area

Neuroscience

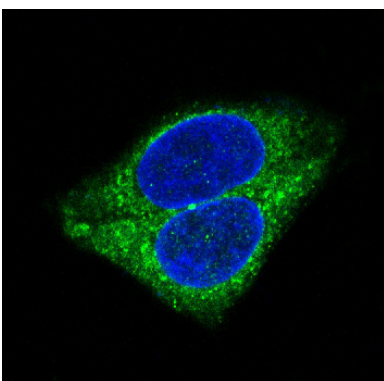
## Image Data



Western blot analysis of Synaptophysin in SH-SY5Y lysates using Synaptophysin antibody.



Immunohistochemistry analysis of paraffin-embedded mouse brain using Synaptophysin antibody. High-pressure and temperature Sodium Citrate pH 6.0 was used for antigen retrieval.



Immunofluorescence analysis of Synaptophysin in PC-12 using Synaptophysin antibody.