
Product Name: OTX1 Rabbit Polyclonal Antibody**Catalog #: APRab00018**

For research use only.

Summary

Description	Rabbit polyclonal Antibody
Host	Rabbit
Application	WB
Reactivity	Human, Mouse, Rat
Conjugation	Unconjugated
Modification	Unmodified
Isotype	IgG
Clonality	Polyclonal
Form	Liquid
Concentration	1mg/ml
Storage	Aliquot and store at -20°C (valid for 12 months). Avoid freeze/thaw cycles.
Shipping	Ice bags
Buffer	Rabbit IgG in phosphate buffered saline , pH 7.4, 150mM NaCl, 0.02% sodium azide and 50% glycerol.
Purification	Affinity Chromatography

Application

Dilution Ratio	WB 1:500-1:1000
Molecular Weight	Calculated MW: 37 kDa; Observed MW: 37 kDa

Antigen Information

Gene Name	OTX1
Alternative Names	Homeobox protein OTX1 (Orthodenticle homolog 1)
Gene ID	5013
SwissProt ID	P32242
Immunogen	A synthetic peptide of human Otx1

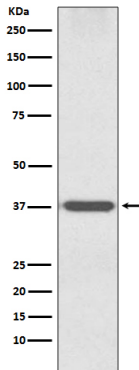
Background

Probably plays a role in the development of the brain and the sense organs. Can bind to the BCD target sequence (BTS): 5'-TCTAATCCC-3'.

Research Area

Neuroscience

Image Data



Western blot analysis of Otx1 in mouse brain lysates using OTX1 antibody.