
Product Name: KDEL Rabbit Polyclonal Antibody**Catalog #: APRab00011**

For research use only.

Summary

Description	Rabbit polyclonal Antibody
Host	Rabbit
Application	WB,IHC,ICC/IF,FC
Reactivity	Human,Mouse,Rat
Conjugation	Unconjugated
Modification	Unmodified
Isotype	IgG
Clonality	Polyclonal
Form	Liquid
Concentration	1mg/ml
Storage	Aliquot and store at -20°C (valid for 12 months). Avoid freeze/thaw cycles.
Shipping	Ice bags
Buffer	Rabbit IgG in phosphate buffered saline , pH 7.4, 150mM NaCl, 0.02% sodium azide and 50% glycerol.
Purification	Affinity Chromatography

Application

Dilution Ratio	WB 1:500-1:1000,IHC 1:50-1:100,ICC/IF 1:50-1:200,FC 1:50-1:100
Molecular Weight	Calculated MW: 25 kDa; Observed MW: 78kDa kDa

Antigen Information

Gene Name	KDEL1
Alternative Names	Lys-Asp-Glu-Leu (KDEL)
Gene ID	10945
SwissProt ID	P24390
Immunogen	

Background

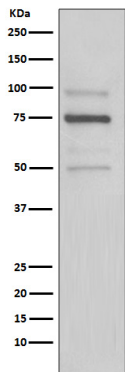
Determines the specificity of the luminal ER protein retention system. Required for the retention of luminal endoplasmic reticulum proteins. Determines the specificity of the luminal ER protein retention system. Also required for normal vesicular

traffic through the Golgi. This receptor recognizes K-D-E-L.

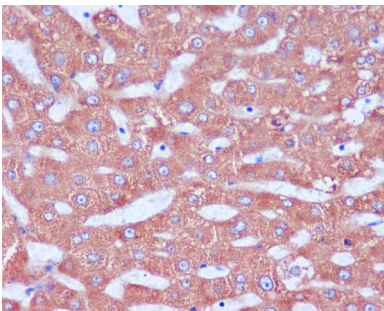
Research Area

Tags & Cell Markers

Image Data



Western blot analysis of KDEL in HeLa lysates using KDEL antibody.



Immunohistochemistry analysis of paraffin-embedded Human liver using KDEL antibody. High-pressure and temperature Sodium Citrate pH 6.0 was used for antigen retrieval.