

---

**Product Name: PMS2 Rabbit Polyclonal Antibody****Catalog #: APRab00008**

For research use only.

**Summary**

<b>Description</b>	Rabbit polyclonal Antibody
<b>Host</b>	Rabbit
<b>Application</b>	WB,IHC,ICC/IF,FC,IP
<b>Reactivity</b>	Human
<b>Conjugation</b>	Unconjugated
<b>Modification</b>	Unmodified
<b>Isotype</b>	IgG
<b>Clonality</b>	Polyclonal
<b>Form</b>	Liquid
<b>Concentration</b>	1mg/ml
<b>Storage</b>	Aliquot and store at -20°C (valid for 12 months). Avoid freeze/thaw cycles.
<b>Shipping</b>	Ice bags
<b>Buffer</b>	Rabbit IgG in phosphate buffered saline , pH 7.4, 150mM NaCl, 0.02% sodium azide and 50% glycerol.
<b>Purification</b>	Affinity Chromatography

**Application**

<b>Dilution Ratio</b>	WB 1:500-1:1000,IHC 1:50-1:100,ICC/IF 1:50-1:200,FC 1:50-1:100,IP 1:20-1:50
<b>Molecular Weight</b>	Calculated MW: 96 kDa; Observed MW: 110 kDa

**Antigen Information**

<b>Gene Name</b>	PMS2
<b>Alternative Names</b>	DNA mismatch repair gene; DNA mismatch repair protein PMS2; HNPCC4; PMS1 protein homolog 2
<b>Gene ID</b>	5395
<b>SwissProt ID</b>	P54278
<b>Immunogen</b>	A synthetic peptide of human PMS2

**Background**

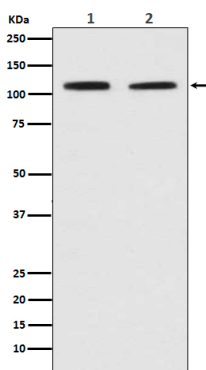
Assembly of the MutL-MutS-heteroduplex ternary complex in presence of RFC and PCNA is sufficient to activate endonuclease

activity of PMS2. It introduces single-strand breaks near the mismatch and thus generates new entry points for the exonuclease EXO1 to degrade the strand containing the mismatch. DNA methylation would prevent cleavage and therefore assure that only the newly mutated DNA strand is going to be corrected.

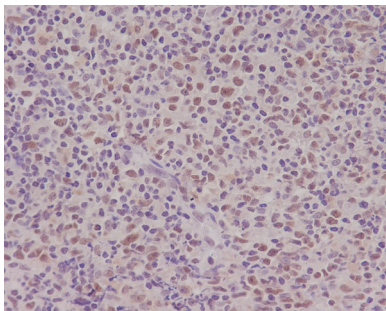
## Research Area

Epigenetics and Nuclear Signaling

## Image Data



Western blot analysis of PMS2 in (1) Jurkat lysates; (2) HeLa lysates using PMS2 antibody.



Immunohistochemistry analysis of paraffin-embedded Human tonsil using PMS2 antibody. High-pressure and temperature Sodium Citrate pH 6.0 was used for antigen retrieval.