

---

**Product Name: Rad51 Rabbit Polyclonal Antibody****Catalog #: APRab00007**

For research use only.

**Summary**

<b>Description</b>	Rabbit polyclonal Antibody
<b>Host</b>	Rabbit
<b>Application</b>	WB,IHC,ICC/IF,FC,IP
<b>Reactivity</b>	Human,Mouse,Rat
<b>Conjugation</b>	Unconjugated
<b>Modification</b>	Unmodified
<b>Isotype</b>	IgG
<b>Clonality</b>	Polyclonal
<b>Form</b>	Liquid
<b>Concentration</b>	1mg/ml
<b>Storage</b>	Aliquot and store at -20°C (valid for 12 months). Avoid freeze/thaw cycles.
<b>Shipping</b>	Ice bags
<b>Buffer</b>	Rabbit IgG in phosphate buffered saline , pH 7.4, 150mM NaCl, 0.02% sodium azide and 50% glycerol.
<b>Purification</b>	Affinity Chromatography

**Application**

<b>Dilution Ratio</b>	WB 1:500-1:1000,IHC 1:50-1:100,ICC/IF 1:50-1:200,FC 1:50-1:100,IP 1:20-1:50
<b>Molecular Weight</b>	Calculated MW: 37 kDa; Observed MW: 37 kDa

**Antigen Information**

<b>Gene Name</b>	RAD51
<b>Alternative Names</b>	RAD51; RAD51A; RECA; DNA repair protein RAD51 homolog 1; HsRAD51; hRAD51; RAD51 homolog A
<b>Gene ID</b>	5888
<b>SwissProt ID</b>	Q06609
<b>Immunogen</b>	A synthetic peptide of human Rad51

**Background**

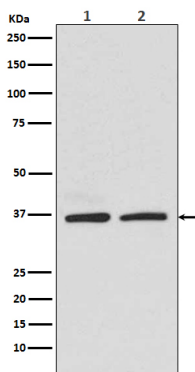
Rad51 participates in a common DNA damage response pathway associated with the activation of homologous recombination

and double-strand break repair. Binds to single and double-stranded DNA and exhibits DNA-dependent ATPase activity. Underwinds duplex DNA and forms helical nucleoprotein filaments.

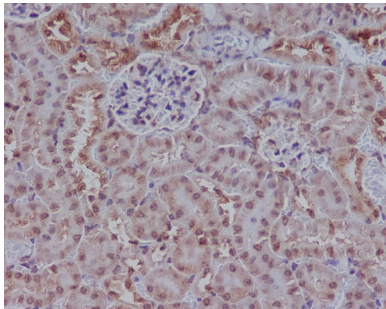
## Research Area

Epigenetics and Nuclear Signaling

## Image Data



Western blot analysis of Rad51 in (1)HEK293 lysates; (2)K562 lysates using Rad51 antibody.



Immunohistochemistry analysis of paraffin-embedded mouse kidney using Rad51 antibody. High-pressure and temperature Sodium Citrate pH 6.0 was used for antigen retrieval.