

Product Name: Caveolin 1 Rabbit Polyclonal Antibody**Catalog #: APRab00005**

For research use only.

Summary

Description	Rabbit polyclonal Antibody
Host	Rabbit
Application	WB,IHC,ICC/IF
Reactivity	Human
Conjugation	Unconjugated
Modification	Unmodified
Isotype	IgG
Clonality	Polyclonal
Form	Liquid
Concentration	1mg/ml
Storage	Aliquot and store at -20°C (valid for 12 months). Avoid freeze/thaw cycles.
Shipping	Ice bags
Buffer	Rabbit IgG in phosphate buffered saline , pH 7.4, 150mM NaCl, 0.02% sodium azide and 50% glycerol.
Purification	Affinity Chromatography

Application

Dilution Ratio	WB 1:500-1:1000,IHC 1:50-1:100,ICC/IF 1:50-1:200
Molecular Weight	Calculated MW: 20 kDa; Observed MW: 25 kDa

Antigen Information

Gene Name	CAV1
Alternative Names	CAV1; CAV; Caveolin-1
Gene ID	857
SwissProt ID	Q03135
Immunogen	A synthetic peptide corresponding to target protein

Background

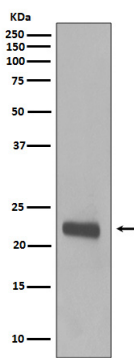
Caveolin-1 may act as a scaffolding protein within caveolar membranes. Interacts directly with G-protein alpha subunits and can functionally regulate their activity (By similarity). Involved in the costimulatory signal essential for T-cell receptor (TCR)-

mediated T-cell activation. Its binding to DPP4 induces T-cell proliferation and NF-kappa-B activation in a T-cell receptor/CD3-dependent manner. Recruits CTNNB1 to caveolar membranes and may regulate CTNNB1-mediated signaling through the Wnt pathway.

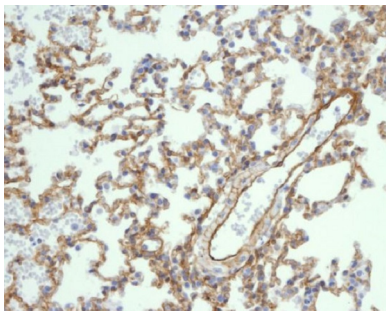
Research Area

Cardiovascular

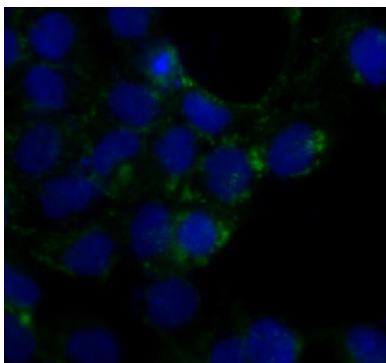
Image Data



Western blot analysis of Caveolin1 in A431 lysates using Caveolin 1 antibody.



Immunohistochemistry analysis of paraffin-embedded mouse lung using Caveolin1 antibody. High-pressure and temperature Sodium Citrate pH 6.0 was used for antigen retrieval.



Immunofluorescence analysis of Caveolin 1 in A431 using Caveolin1 antibody.