
Product Name: Caveolin 2 Rabbit Polyclonal Antibody**Catalog #: APRab00004**

For research use only.

Summary

Description	Rabbit polyclonal Antibody
Host	Rabbit
Application	WB,IHC,ICC/IF,IP
Reactivity	Human
Conjugation	Unconjugated
Modification	Unmodified
Isotype	IgG
Clonality	Polyclonal
Form	Liquid
Concentration	1mg/ml
Storage	Aliquot and store at -20°C (valid for 12 months). Avoid freeze/thaw cycles.
Shipping	Ice bags
Buffer	Rabbit IgG in phosphate buffered saline , pH 7.4, 150mM NaCl, 0.02% sodium azide and 50% glycerol.
Purification	Affinity Chromatography

Application

Dilution Ratio	WB 1:500-1:1000,IHC 1:50-1:100,ICC/IF 1:50-1:200,IP 1:20-1:50
Molecular Weight	Calculated MW: 18 kDa; Observed MW: 18 kDa

Antigen Information

Gene Name	CAV2
Alternative Names	CAV2; Caveolae protein 20 Kd; Caveolin 2; Caveolin 2 isoform a and b; Caveolin-2
Gene ID	858
SwissProt ID	P51636
Immunogen	A synthetic peptide of human Caveolin-2

Background

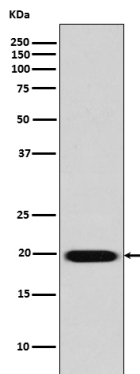
May act as a scaffolding protein within caveolar membranes. Interacts directly with G-protein alpha subunits and can functionally regulate their activity. Acts as an accessory protein in conjunction with CAV1 in targeting to lipid rafts and driving

caveolae formation.

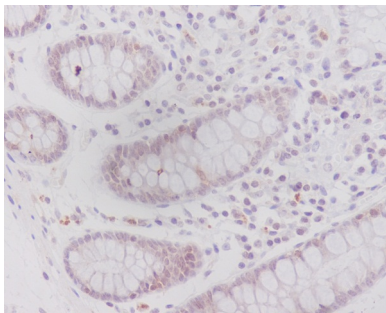
Research Area

Tags & Cell Markers

Image Data



Western blot analysis of Caveolin 2 in HeLa lysates using Caveolin 2 antibody.



Immunohistochemistry analysis of paraffin-embedded Human colon using Caveolin2 antibody. High-pressure and temperature Sodium Citrate pH 6.0 was used for antigen retrieval.