
Product Name: KIFC1 Rabbit Polyclonal Antibody**Catalog #: APRab00003**

For research use only.

Summary

Description	Rabbit polyclonal Antibody
Host	Rabbit
Application	WB,IHC,ICC/IF,IP
Reactivity	Human
Conjugation	Unconjugated
Modification	Unmodified
Isotype	IgG
Clonality	Polyclonal
Form	Liquid
Concentration	1mg/ml
Storage	Aliquot and store at -20°C (valid for 12 months). Avoid freeze/thaw cycles.
Shipping	Ice bags
Buffer	Rabbit IgG in phosphate buffered saline , pH 7.4, 150mM NaCl, 0.02% sodium azide and 50% glycerol.
Purification	Affinity Chromatography

Application

Dilution Ratio	WB 1:500-1:1000,IHC 1:50-1:100,ICC/IF 1:50-1:200,IP 1:20-1:50
Molecular Weight	Calculated MW: 74 kDa; Observed MW: 74 kDa

Antigen Information

Gene Name	KIFC1
Alternative Names	HSET; KNSL2
Gene ID	3833
SwissProt ID	Q9BW19
Immunogen	A synthetic peptide of human KIFC1

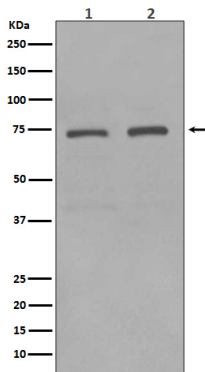
Background

Minus end-directed microtubule-dependent motor required for bipolar spindle formation. May contribute to movement of early endocytic vesicles.

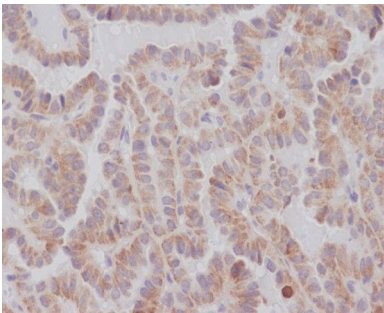
Research Area

Signal Transduction

Image Data



Western blot analysis of KIFC1 in (1) HeLa lysates; (2) HepG2 lysates using KIFC1 antibody.



Immunohistochemistry analysis of paraffin-embedded Human thyroid carcinoma using KIFC1 antibody. High-pressure and temperature Sodium Citrate pH 6.0 was used for antigen retrieval.