

Summary

Production Name	Mapre2 Rat Monoclonal Antibody
Description	Rat Monoclonal antibody
Host	Rat
Application	WB,IP,IHC
Reactivity	Mouse, Human, Rat, Ape, Hamster

Performance

Conjugation	Unconjugated
Modification	Unmodified
Isotype	Rat IgG2b
Clonality	Monoclonal
Form	Liquid
Storage	Store at 4°C short term. Aliquot and store at -20°C long term. Avoid freeze/thaw cycles.
Buffer	Purified antibody in PBS with 0.05% sodium azide
Purification	Affinity Purification

Immunogen

Gene Name	Mapre2
Alternative Names	Mapre2
Gene ID	
SwissProt ID	Q8R001.Purified recombinant fragment of mouse Mapre2

Application

Dilution Ratio	WB:1:500-1:1000,IP:1:100-1:200,IHC:1:100-1:200
Molecular Weight	41kDa,43kDa

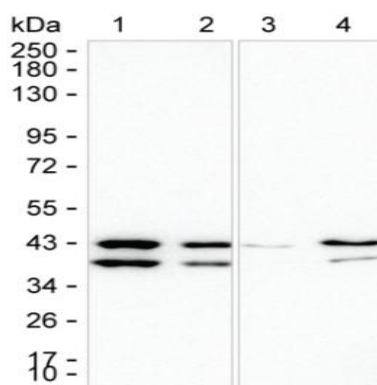
Background

Product Name: Mapre2 Rat Monoclonal Antibody
Catalog #: AMR83412

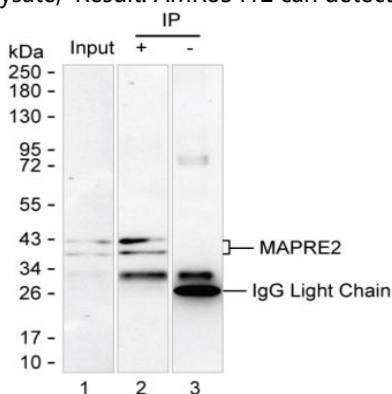


Research Area

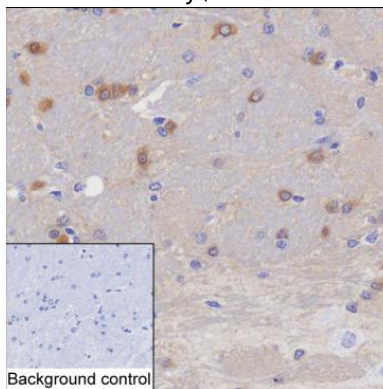
Image Data



Lane 1: 15 μ g of rat brain tissue lysate; Lane 2: 15 μ g of mouse brain tissue lysate; Lane 3: 15 μ g of NIH-3T3 lysate; Lane 4: 15 μ g of PMA treated Jurkat lysate; Result: AMR83412 can detect Mapre2 by Western blotting.



Lane 1: Rat brain tissue lysate; Lane 2: Mapre2 immunoprecipitated from rat brain tissue lysate by AMR83412; Lane 3: The same as Lane 2 but use IgG isotype control antibody; Result: AMR83412 can immunoprecipitate Mapre2;



IHC-P analysis of mouse brain tissue by Mapre2 Antibody (AMR83412)

Product Name: Mapre2 Rat Monoclonal Antibody
Catalog #: AMR83412



Note

For research use only.