

**Product Name: α tubulin (Zebrafish Specific) Mouse
Monoclonal Antibody
Catalog #: AMM86156**

Summary

Production Name	α tubulin (Zebrafish Specific) Mouse Monoclonal Antibody
Description	Mouse Monoclonal Antibody
Host	Mouse
Application	WB
Reactivity	Zebrafish

Performance

Conjugation	Unconjugated
Modification	Unmodified
Isotype	IgG
Clonality	Monoclonal
Form	Liquid
Storage	Store at 4°C short term. Aliquot and store at -20°C long term. Avoid freeze/thaw cycles.
Buffer	Purified antibody in PBS with 0.05% sodium azide and 50% glycerol.
Purification	Affinity Purification

Immunogen

Gene Name	α tubulin Mouse(Zebrafish Specific)
Alternative Names	alpha-tubulin N-acetyltransferase; ATAT1; C6orf134; CF134; chromosome 6 open reading frame 134; DKFZp547J097; FLJ13158; LOC79969; MEC-17; MEC17; Nbla00487
Gene ID	7846;
SwissProt ID	Q71U36.

Application

Dilution Ratio	WB:1:5000-1:10000
Molecular Weight	52kDa

Background

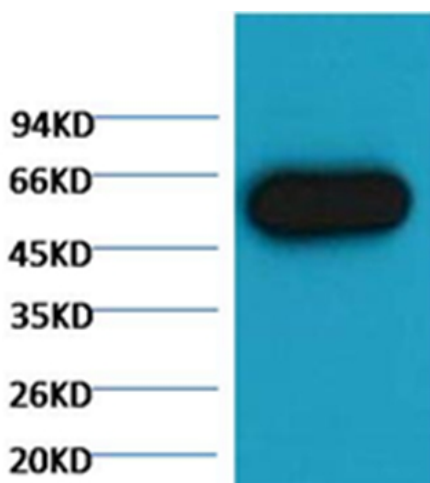
**Product Name: α tubulin (Zebrafish Specific) Mouse
Monoclonal Antibody
Catalog #: AMM86156**



Tubulin is one of several members of a small family of globular proteins. The tubulin superfamily includes five distinct families, the α -, β -, γ -, δ -, and ϵ -tubulins. The most common members of the tubulin family are α -tubulin and β -tubulin, the proteins that make up microtubules. Each has a molecular weight of approximately 55 KD. Microtubules are assembled from dimers of α - and β -tubulin.

Research Area

Image Data



Western blot analysis of Zebrafish skeletal muscle, using AMM86156 diluted at 1:5,000.

Note

For research use only.