

Product Name: PSMC2 Mouse Monoclonal Antibody**Catalog #: AMM86136**

For research use only.

Summary

Description	Mouse monoclonal Antibody
Host	Mouse
Application	WB
Reactivity	Human, Mouse
Conjugation	Unconjugated
Modification	Unmodified
Isotype	Mouse IgG1
Clonality	Monoclonal
Form	Liquid
Concentration	1mg/ml
Storage	Aliquot and store at -20°C (valid for 12 months). Avoid freeze/thaw cycles.
Shipping	Ice bags
Buffer	Purified antibody in PBS with 0.05% sodium azide.
Purification	Affinity Purification

Application

Dilution Ratio	WB 1:1000-1:2000
Molecular Weight	48.6kDa

Antigen Information

Gene Name	PSMC2
Alternative Names	26S protease regulatory subunit 7, 26S proteasome AAA-ATPase subunit RPT1, Proteasome 26S subunit ATPase 2, Protein MSS1, PSMC2, MSS1
Gene ID	5701.0
SwissProt ID	P35998
Immunogen	This antibody is generated from a mouse immunized with a recombinant protein from human.

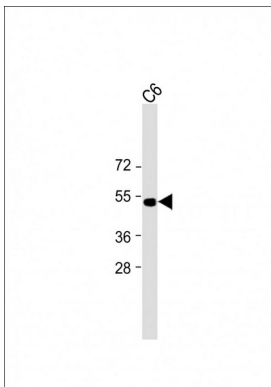
Background

The 26S protease is involved in the ATP-dependent degradation of ubiquitinated proteins. The regulatory (or ATPase) complex

confers ATP dependency and substrate specificity to the 26S complex. In case of HIV-1 infection, positive modulator of Tat-mediated transactivation.

Research Area

Image Data



All lanes : Anti-PSMC2 Antibody at 1:1000 dilution + C6 cell lysate