
Product Name: MMP14 Mouse Monoclonal Antibody**Catalog #: AMM86132**

For research use only.

Summary

Description	Mouse monoclonal Antibody
Host	Mouse
Application	WB
Reactivity	Human, Mouse
Conjugation	Unconjugated
Modification	Unmodified
Isotype	Mouse IgM
Clonality	Monoclonal
Form	Liquid
Concentration	1mg/ml
Storage	Aliquot and store at -20°C (valid for 12 months). Avoid freeze/thaw cycles.
Shipping	Ice bags
Buffer	Purified antibody in PBS with 0.05% sodium azide.
Purification	Affinity Purification

Application

Dilution Ratio	WB 1:500-1:2000
Molecular Weight	65.9kDa

Antigen Information

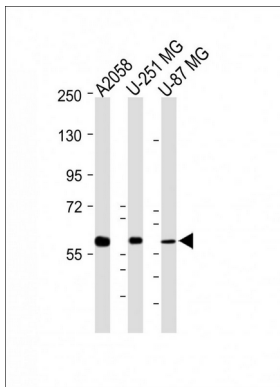
Gene Name	MMP14 Matrix metalloproteinase-14, MMP-14, MMP-X1, Membrane-type matrix metalloproteinase
Alternative Names	1, MT-MMP 1, MTMMP1, Membrane-type-1 matrix metalloproteinase, MT1-MMP, MT1MMP, MMP14
Gene ID	4323.0
SwissProt ID	P50281
Immunogen	This MMP14 antibody is generated from mice immunized with a KLH conjugated synthetic peptide between 470-499 amino acids from the C-terminal region of human MMP14.

Background

Proteins of the matrix metalloproteinase (MMP) family are involved in the breakdown of extracellular matrix in normal physiological processes, such as embryonic development, reproduction, and tissue remodeling, as well as in disease processes, such as arthritis and metastasis. Most MMP's are secreted as inactive proproteins which are activated when cleaved by extracellular proteinases. However, the protein encoded by this gene is a member of the membrane-type MMP (MT-MMP) subfamily; each member of this subfamily contains a potential transmembrane domain suggesting that these proteins are expressed at the cell surface rather than secreted. This protein activates MMP2 protein, and this activity may be involved in tumor invasion.

Research Area

Image Data



All lanes : Anti-MMP14 Antibody (C-term) at 1:1000 dilution