
Product Name: C3 Mouse Monoclonal Antibody**Catalog #: AMM86081**

For research use only.

Summary

Description	Mouse monoclonal Antibody
Host	Mouse
Application	WB
Reactivity	Human
Conjugation	Unconjugated
Modification	Unmodified
Isotype	Mouse IgG1
Clonality	Monoclonal
Form	Liquid
Concentration	1mg/ml
Storage	Aliquot and store at -20°C (valid for 12 months). Avoid freeze/thaw cycles.
Shipping	Ice bags
Buffer	Purified antibody in PBS with 0.05% sodium azide.
Purification	Affinity Purification

Application

Dilution Ratio	WB 1:1000-1:2000
Molecular Weight	187.1kDa

Antigen Information

Gene Name	C3 Complement C3, C3 and PZP-like alpha-2-macroglobulin domain-containing protein 1, Complement C3 beta chain, C3-beta-c, C3bc, Complement C3 alpha chain, C3a anaphylatoxin, Acylation stimulating protein, ASP, C3adesArg, Complement C3b alpha' chain, Complement C3c alpha' chain fragment 1, Complement C3dg fragment, Complement C3g fragment, Complement C3d fragment, Complement C3f fragment, Complement C3c alpha' chain fragment 2, C3, CPAMD1
Alternative Names	
Gene ID	718.0
SwissProt ID	P01024
Immunogen	This C3 antibody is generated from mice immunized with a KLH conjugated synthetic

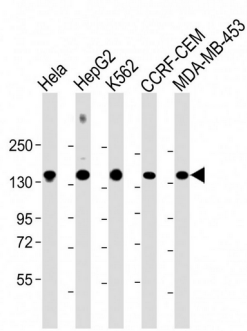
peptide between 1353-1382 amino acids from the C-terminal region of human C3.

Background

Complement component C3 plays a central role in the activation of complement system. Its activation is required for both classical and alternative complement activation pathways. People with C3 deficiency are susceptible to bacterial infection.

Research Area

Image Data



All lanes : Anti-C3 Antibody (C-term) at 1:2000 dilution