

---

**Product Name: AKAP13 Mouse Monoclonal Antibody****Catalog #: AMM86069**

For research use only.

**Summary**

<b>Description</b>	Mouse monoclonal Antibody
<b>Host</b>	Mouse
<b>Application</b>	WB
<b>Reactivity</b>	Human
<b>Conjugation</b>	Unconjugated
<b>Modification</b>	Unmodified
<b>Isotype</b>	Mouse IgG1
<b>Clonality</b>	Monoclonal
<b>Form</b>	Liquid
<b>Concentration</b>	1mg/ml
<b>Storage</b>	Aliquot and store at -20°C (valid for 12 months). Avoid freeze/thaw cycles.
<b>Shipping</b>	Ice bags
<b>Buffer</b>	Purified antibody in PBS with 0.05% sodium azide.
<b>Purification</b>	Affinity Purification

**Application**

<b>Dilution Ratio</b>	WB 1:2000-1:8000
<b>Molecular Weight</b>	307.6kDa

**Antigen Information**

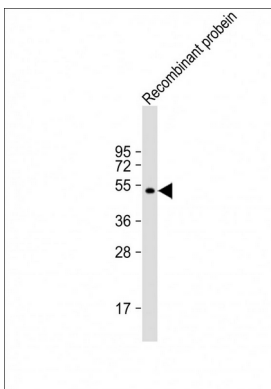
<b>Gene Name</b>	AKAP13 A-kinase anchor protein 13, AKAP-13, AKAP-Lbc, Breast cancer nuclear receptor-binding auxiliary protein, Guanine nucleotide exchange factor Lbc, Human thyroid-anchoring protein
<b>Alternative Names</b>	31, Lymphoid blast crisis oncogene, LBC oncogene, Non-oncogenic Rho GTPase-specific GTP exchange factor, Protein kinase A-anchoring protein 13, PRKA13, p47, AKAP13, BRX, HT31, LBC
<b>Gene ID</b>	11214.0
<b>SwissProt ID</b>	Q12802
<b>Immunogen</b>	This AKAP13 antibody is generated from a mouse immunized with a KLH conjugated synthetic peptide between 18-170 amino acids from human AKAP13.

## Background

Anchors cAMP-dependent protein kinase (PKA) and acts as an adapter protein to selectively couple G alpha-13 and Rho. Augments gene activation by the estrogen receptor in an element- specific and ligand-dependent manner. Activates estrogen receptor beta by a p38 MAPK-dependent pathway. Stimulates exchange activity on Rho proteins in vitro, but not on CDC42, Ras or Rac and may bind calcium ions.

## Research Area

## Image Data



Anti-AKAP13 Antibody at 1:8000 dilution + Recombinant probein