

**Product Name: FAT1 Mouse Monoclonal Antibody****Catalog #: AMM86026**

For research use only.

**Summary**

<b>Description</b>	Mouse monoclonal Antibody
<b>Host</b>	Mouse
<b>Application</b>	WB
<b>Reactivity</b>	Human
<b>Conjugation</b>	Unconjugated
<b>Modification</b>	Unmodified
<b>Isotype</b>	Mouse IgG1
<b>Clonality</b>	Monoclonal
<b>Form</b>	Liquid
<b>Concentration</b>	1mg/ml
<b>Storage</b>	Aliquot and store at -20°C (valid for 12 months). Avoid freeze/thaw cycles.
<b>Shipping</b>	Ice bags
<b>Buffer</b>	Purified antibody in PBS with 0.05% sodium azide.
<b>Purification</b>	Affinity Purification

**Application**

<b>Dilution Ratio</b>	WB 1:1000-1:2000
<b>Molecular Weight</b>	506.3kDa

**Antigen Information**

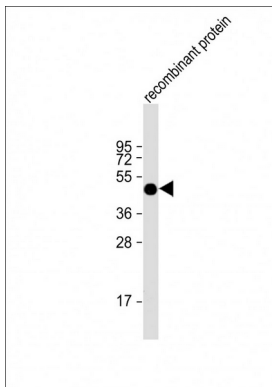
<b>Gene Name</b>	FAT1
<b>Alternative Names</b>	Protocadherin Fat 1, Cadherin family member 7, Cadherin-related tumor suppressor homolog, Protein fat homolog, Protocadherin Fat 1, nuclear form, FAT1, CDHF7, FAT
<b>Gene ID</b>	2195.0
<b>SwissProt ID</b>	Q14517
<b>Immunogen</b>	This FAT1 antibody is generated from a mouse immunized with a recombinant protein between 4203-4539 amino acids from human FAT1.

**Background**

Plays an essential role for cellular polarization, directed cell migration and modulating cell-cell contact.

## Research Area

## Image Data



Anti-FAT1 Antibody at 1:2000 dilution + recombinant protein