

**Product Name: LAP2 Mouse Monoclonal Antibody****Catalog #: AMM86017**

For research use only.

**Summary**

<b>Description</b>	Mouse monoclonal Antibody
<b>Host</b>	Mouse
<b>Application</b>	WB
<b>Reactivity</b>	Human, Mouse, Rat
<b>Conjugation</b>	Unconjugated
<b>Modification</b>	Unmodified
<b>Isotype</b>	Mouse IgG1
<b>Clonality</b>	Monoclonal
<b>Form</b>	Liquid
<b>Concentration</b>	1mg/ml
<b>Storage</b>	Aliquot and store at -20°C (valid for 12 months). Avoid freeze/thaw cycles.
<b>Shipping</b>	Ice bags
<b>Buffer</b>	Purified antibody in PBS with 0.05% sodium azide.
<b>Purification</b>	Affinity Purification

**Application**

<b>Dilution Ratio</b>	WB 1:500-1:2000
<b>Molecular Weight</b>	158.3kDa

**Antigen Information**

<b>Gene Name</b>	LAP2
<b>Alternative Names</b>	Protein LAP2, Densin-180-like protein, Erbb2-interacting protein, Erbin, ERBB2IP, ERBIN, KIAA1225, LAP2
<b>Gene ID</b>	55914.0
<b>SwissProt ID</b>	Q96RT1
<b>Immunogen</b>	This LAP2 antibody is generated from a mouse immunized with a recombinant protein of human LAP2.

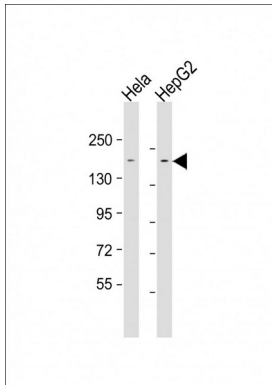
**Background**

Acts as an adapter for the receptor ERBB2, in epithelia. By binding the unphosphorylated 'Tyr-1248' of receptor ERBB2, it may

contribute to stabilize this unphosphorylated state.

## Research Area

## Image Data



All lanes : Anti-LAP2 Antibody at 1:1000-1:2000 dilution