

Product Name: PSMA5 Mouse Monoclonal Antibody**Catalog #: AMM85993**

For research use only.

Summary

Description	Mouse monoclonal Antibody
Host	Mouse
Application	WB,IHC,ICC
Reactivity	Human, Mouse, Rat
Conjugation	Unconjugated
Modification	Unmodified
Isotype	Mouse IgG1
Clonality	Monoclonal
Form	Liquid
Concentration	1mg/ml
Storage	Aliquot and store at -20°C (valid for 12 months). Avoid freeze/thaw cycles.
Shipping	Ice bags
Buffer	Purified antibody in TBS with 0.05% sodium azide.
Purification	Affinity Purification

Application

Dilution Ratio	WB 1:500-1:1000,IHC 1:100-1:500,ICC 1:25-1:50
Molecular Weight	26.4kDa

Antigen Information

Gene Name	PSMA5
Alternative Names	Proteasome subunit alpha type-5, Macropain zeta chain, Multicatalytic endopeptidase complex zeta chain, Proteasome zeta chain, PSMA5
Gene ID	5686.0
SwissProt ID	P28066
Immunogen	Purified His-tagged PSMA5 protein(Fragment) was used to produced this monoclonal antibody.

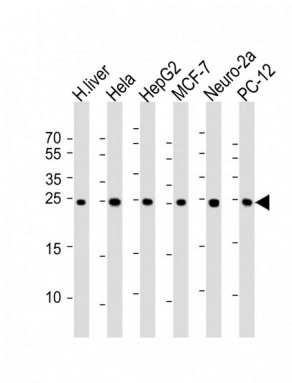
Background

The proteasome is a multicatalytic proteinase complex with a highly ordered ring-shaped 20S core structure. The core

structure is composed of 4 rings of 28 non-identical subunits; 2 rings are composed of 7 alpha subunits and 2 rings are composed of 7 beta subunits. Proteasomes are distributed throughout eukaryotic cells at a high concentration and cleave peptides in an ATP/ubiquitin-dependent process in a non-lysosomal pathway. An essential function of a modified proteasome, the immunoproteasome, is the processing of class I MHC peptides. This gene encodes a member of the peptidase T1A family, that is a 20S core alpha subunit.

Research Area

Image Data



All lanes : Anti-PSMA5 Antibody at 1:1000 dilution