

**Product Name: PPP2R1B Mouse Monoclonal Antibody**  
**Catalog #: AMM85987**



## Summary

<b>Production Name</b>	PPP2R1B Mouse Monoclonal Antibody
<b>Description</b>	Mouse Monoclonal Antibody
<b>Host</b>	Mouse
<b>Application</b>	WB,IHC,ICC,FC
<b>Reactivity</b>	Human, Mouse, Rat

## Performance

<b>Conjugation</b>	Unconjugated
<b>Modification</b>	Unmodified
<b>Isotype</b>	Mouse IgG1
<b>Clonality</b>	Monoclonal
<b>Form</b>	Liquid
<b>Storage</b>	Store at 4°C short term. Aliquot and store at -20°C long term. Avoid freeze/thaw cycles.
<b>Buffer</b>	Purified antibody in PBS with 0.05% sodium azide.
<b>Purification</b>	Affinity Purification

## Immunogen

<b>Gene Name</b>	PPP2R1B
<b>Alternative Names</b>	Serine/threonine-protein phosphatase 2A 65 kDa regulatory subunit A beta isoform, PP2A subunit A isoform PR65-beta, PP2A subunit A isoform R1-beta, PPP2R1B
<b>Gene ID</b>	5519.0
<b>SwissProt ID</b>	P30154. This PPP2R1B antibody is generated from a mouse immunized with a recombinant protein of human PPP2R1B.

## Application

<b>Dilution Ratio</b>	WB:1:4000,IHC:1:100-1:500,ICC:1:25,FC:1:25
<b>Molecular Weight</b>	66.2kDa

## Background

**Product Name: PPP2R1B Mouse Monoclonal Antibody**  
**Catalog #: AMM85987**

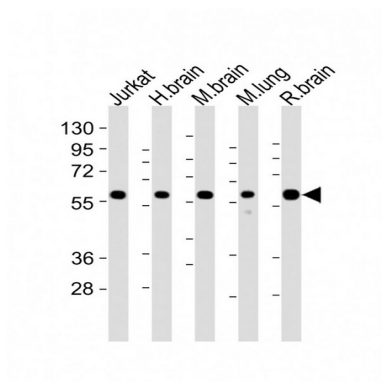


The PR65 subunit of protein phosphatase 2A serves as a scaffolding molecule to coordinate the assembly of the catalytic subunit and a variable regulatory B subunit.

## Research Area

TGF-beta signaling pathway, PI3K-Akt signaling pathway

## Image Data



All lanes : Anti-PPP2R1B Antibody at 1:4000 dilution

## Note

For research use only.