

---

**Product Name: Myoglobin Mouse Monoclonal Antibody****Catalog #: AMM85965**

For research use only.

**Summary**

<b>Description</b>	Mouse monoclonal Antibody
<b>Host</b>	Mouse
<b>Application</b>	WB
<b>Reactivity</b>	Human, Mouse
<b>Conjugation</b>	Unconjugated
<b>Modification</b>	Unmodified
<b>Isotype</b>	Mouse IgG1
<b>Clonality</b>	Monoclonal
<b>Form</b>	Liquid
<b>Concentration</b>	1mg/ml
<b>Storage</b>	Aliquot and store at -20°C (valid for 12 months). Avoid freeze/thaw cycles.
<b>Shipping</b>	Ice bags
<b>Buffer</b>	Purified antibody in TBS with 0.05% sodium azide.
<b>Purification</b>	Affinity Purification

**Application**

<b>Dilution Ratio</b>	WB 1:500-1:2000
<b>Molecular Weight</b>	17.2kDa

**Antigen Information**

<b>Gene Name</b>	Myoglobin
<b>Alternative Names</b>	Myoglobin, MB
<b>Gene ID</b>	4151.0
<b>SwissProt ID</b>	P02144

**Immunogen**

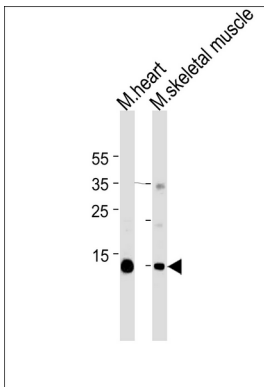
This Myoglobin antibody is generated from a mouse immunized with a KLH conjugated synthetic peptide between 118-150 amino acids from the C-terminal region of human Myoglobin.

**Background**

Serves as a reserve supply of oxygen and facilitates the movement of oxygen within muscles.

## Research Area

## Image Data



Western blot analysis of lysates from mouse heart and skeletal muscle tissue lysates (from left to right), using Myoglobin Antibody (C-term). Myoglobin Mouse Monoclonal Antibody was diluted at 1:1000 at each lane. A goat anti-mouse IgG H&L(HRP) at 1:3000 dilution was used as the secondary antibody. Lysates at 35 $\mu$ g per lane.