

---

**Product Name: CAPN2 Mouse Monoclonal Antibody****Catalog #: AMM85964**

For research use only.

**Summary**

<b>Description</b>	Mouse monoclonal Antibody
<b>Host</b>	Mouse
<b>Application</b>	WB,IHC,FC
<b>Reactivity</b>	Human, Mouse
<b>Conjugation</b>	Unconjugated
<b>Modification</b>	Unmodified
<b>Isotype</b>	Mouse IgG2b
<b>Clonality</b>	Monoclonal
<b>Form</b>	Liquid
<b>Concentration</b>	1mg/ml
<b>Storage</b>	Aliquot and store at -20°C (valid for 12 months). Avoid freeze/thaw cycles.
<b>Shipping</b>	Ice bags
<b>Buffer</b>	Purified antibody in PBS with 0.05% sodium azide.
<b>Purification</b>	Affinity Purification

**Application**

<b>Dilution Ratio</b>	WB 1:500-1:2000,IHC 1:100-1:500,FC 1:50-1:200
<b>Molecular Weight</b>	80.0kDa

**Antigen Information**

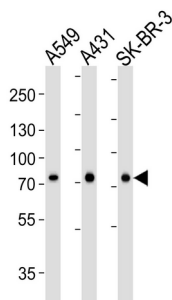
<b>Gene Name</b>	CAPN2 Calpain-2 catalytic subunit, Calcium-activated neutral proteinase 2, CANP 2, Calpain M-type,
<b>Alternative Names</b>	Calpain large polypeptide L2, Calpain-2 large subunit, Millimolar-calpain, M-calpain, CAPN2, CANPL2
<b>Gene ID</b>	824.0
<b>SwissProt ID</b>	P17655
<b>Immunogen</b>	This CAPN2 antibody is generated from a mouse immunized with a KLH conjugated synthetic peptide between amino acids from the human region of human CAPN2.

**Background**

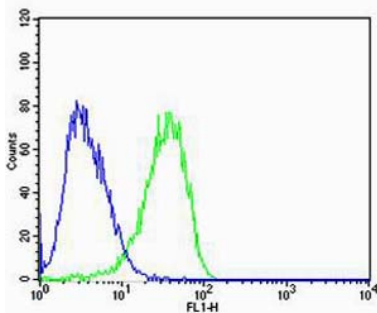
Calcium-regulated non-lysosomal thiol-protease which catalyze limited proteolysis of substrates involved in cytoskeletal remodeling and signal transduction.

## Research Area

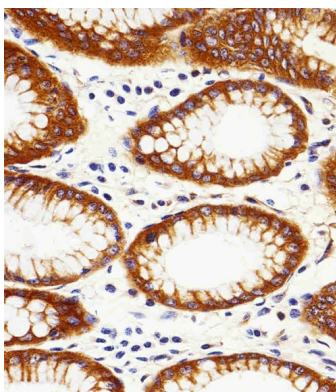
## Image Data



Western blot analysis of lysates from A549, A431, SK-BR-3 cell line (from left to right), using CAPN2 Antibody. CAPN2 Mouse Monoclonal Antibody was diluted at 1:1000 at each lane. A goat anti-mouse IgG H&L(HRP) at 1:3000 dilution was used as the secondary antibody. Lysates at 35µg per lane.



Flow cytometric analysis of U-87 MG cells using CAPN2 Antibody(green, Cat#AMM85964) compared to an isotype control of mouse IgG2b(blue). Antibody was diluted at 1:100 dilution. An Alexa Fluor® 488 goat anti-mouse IgG at 1:400 dilution was used as the secondary antibody.



Immunohistochemical analysis of paraffin-embedded H.stomach section using CAPN2 Antibody(Cat#AMM85964). AMM85964 was diluted at 1:25 dilution. A peroxidase-conjugated goat anti-mouse IgG at 1:400 dilution was used as the secondary antibody, followed by DAB staining.